



Web: www.anbobio.com
www.dijibio.com
Order: order@dijibio.com
Tel: (86) 519 8805 0026

IPKB Antibody [#C11657]

Catalog Number: C11657

Concentration: 1mg/ml

Swiss-Prot No.: Q9C010

Other Names: PKI-beta, cAMP-dependent protein kinase inhibitor beta, PKIB, PRKACN2

Storage/Stability: Store at -20°C/1 year

Form of Antibody: Rabbit IgG in phosphate buffered saline (without Mg²⁺ and Ca²⁺), pH 7.4, 150mM NaCl, 0.02% sodium azide and 50% glycerol.

Immunogen: The antiserum was produced against synthesized peptide derived from internal of human IPKB.

Purification: The antibody was affinity-purified from rabbit antiserum by affinity-chromatography using

epitope-specific immunogen.

Specificity: IPKB antibody detects endogenous levels of total IPKB protein.

Reactivity: Human (Identities = 100%, Positives = 100%);
Mouse (Identities = 100%, Positives = 100%);
Rat (Identities = 100%, Positives = 100%)

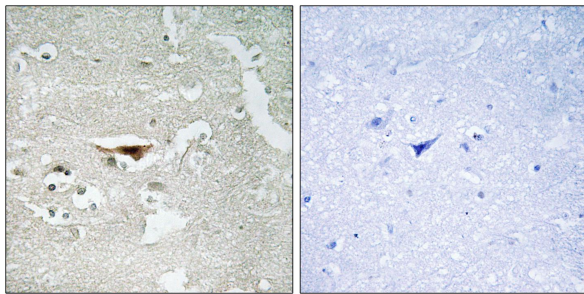
Applications: IHC: 1:50~1:100 IF: 1:100~1:500
ELISA: 1:1000

References:

Zheng L., Biochem. J. 349:403-407(2000).

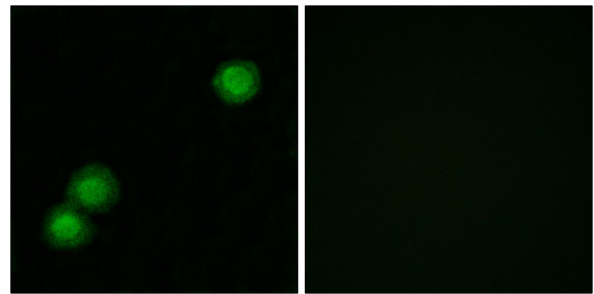
Mungall A.J., Nature 425:805-811(2003).

The MGC Project Team, Genome Res. 14:2121-2127(2004).



Peptide - +

Immunohistochemistry analysis of paraffin-embedded human brain tissue, using IPKB antibody.



Peptide - +

Immunofluorescence analysis of MCF-7 cells, using IPKB antibody.