



Web: www.anbobio.com
www.dijibio.com
Order: order@dijibio.com
Tel: (86) 519 8805 0026

DCLK3 Antibody [#C11659]

Catalog Number: C11659

Concentration: 1mg/ml

Swiss-Prot No.: Q9C098

Other Names: Serine/threonine-protein kinase DCLK3, EC 2.7.11.1, Doublecortin-like and CAM kinase-like 3, Doublecortin-like kinase 3, DCLK3, DCAMKL3, DCDC3C, KIAA1765

Storage/Stability: Store at -20°C/1 year

Form of Antibody: Rabbit IgG in phosphate buffered saline (without Mg²⁺ and Ca²⁺), pH 7.4, 150mM NaCl, 0.02% sodium azide and 50% glycerol.

Immunogen: The antiserum was produced against

synthesized peptide derived from internal of human DCLK3.

Purification: The antibody was affinity-purified from rabbit antiserum by affinity-chromatography using epitope-specific immunogen.

Specificity: DCLK3 antibody detects endogenous levels of total DCLK3 protein.

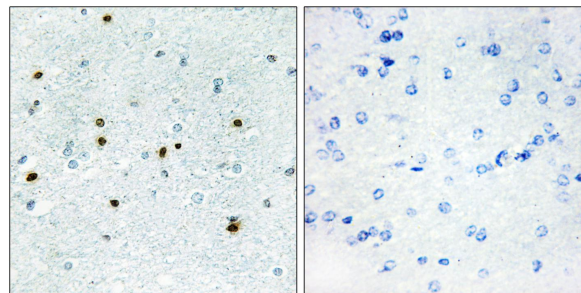
Reactivity: Human (Identities = 100%, Positives = 100%)

Applications: IHC: 1:50~1:100 ELISA: 1:1000

References:

Nagase T., DNA Res. 7:347-355(2000).

Ota T., Nat. Genet. 36:40-45(2004).



Peptide

-

+

Immunohistochemistry analysis of paraffin-embedded human brain tissue, using DCLK3 antibody.