



Web: www.anbobio.com
www.dijibio.com
Order: order@dijibio.com
Tel: (86) 519 8805 0026

RGAP1 Antibody [#C11673]

Catalog Number: C11673

Concentration: 1mg/ml

Swiss-Prot No.: Q9H0H5

Other Names: Rac GTPase-activating protein 1, MgcRacGAP, RACGAP1, KIAA1478, MGCRCAGAP

Storage/Stability: Store at -20°C/1 year

Form of Antibody: Rabbit IgG in phosphate buffered saline (without Mg²⁺ and Ca²⁺), pH 7.4, 150mM NaCl, 0.02% sodium azide and 50% glycerol.

Immunogen: The antiserum was produced against synthesized peptide derived from internal of human RGAP1.

Purification: The antibody was affinity-purified from

rabbit antiserum by affinity-chromatography using epitope-specific immunogen.

Specificity: RGAP1 antibody detects endogenous levels of total RGAP1 protein.

Reactivity: Human (Identities = 100%, Positives = 100%);
Mouse (Identities = 100%, Positives = 100%)

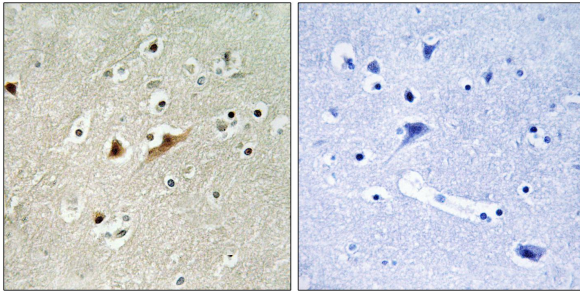
Applications: IHC: 1:50~1:100 IF: 1:100~1:500
ELISA: 1:20000

References:

Kawashima T., Blood 96:2116-2124(2000).

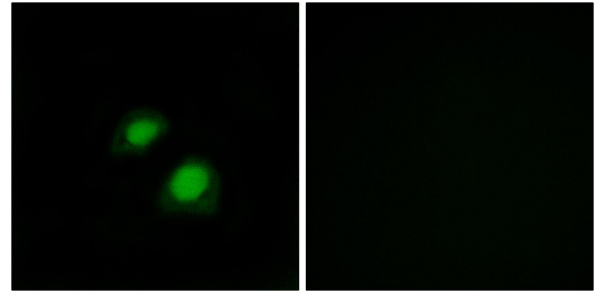
Wiemann S., Genome Res. 11:422-435(2001).

Ota T., Nat. Genet. 36:40-45(2004).



Peptide - +

Immunohistochemistry analysis of paraffin-embedded human brain tissue, using RGAP1 antibody.



Peptide - +

Immunofluorescence analysis of COS-7 cells, using RGAP1 antibody.