



Web: [www.anbobio.com](http://www.anbobio.com)  
[www.dijibio.com](http://www.dijibio.com)  
Order: [order@dijibio.com](mailto:order@dijibio.com)  
Tel: (86) 519 8805 0026

## SLK Antibody [#C11681]

**Catalog Number:** C11681

**Concentration:** 1mg/ml

**Swiss-Prot No.:** Q9H2G2

**Other Names:** STE20-like serine/threonine-protein kinase, EC 2.7.11.1, STE20-like kinase, STE20-related serine/threonine-protein kinase, STE20-related kinase, hSLK, Serine/threonine-protein kinase 2, CTCL tumor antigen se20-9, SLK, KIAA0204, STK2

**Storage/Stability:** Store at -20°C/1 year

**Form of Antibody:** Rabbit IgG in phosphate buffered saline (without Mg<sup>2+</sup> and Ca<sup>2+</sup>), pH 7.4, 150mM NaCl, 0.02% sodium azide and 50% glycerol.

**Immunogen:** The antiserum was produced against synthesized peptide derived from C-terminal of human

SLK.

**Purification:** The antibody was affinity-purified from rabbit antiserum by affinity-chromatography using epitope-specific immunogen.

**Specificity:** SLK antibody detects endogenous levels of total SLK protein.

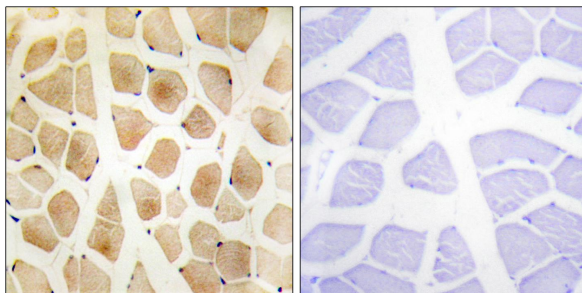
**Reactivity:** Human, Mouse, Rat

**Applications:** WB: 1:500~1:3000 IHC: 1:50~1:100

IF: 1:100~1:500 ELISA: 1:5000

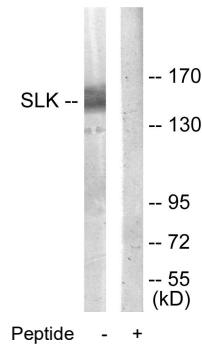
**References:**

Yamada E., *Biochim. Biophys. Acta* 1495:250-262(2000).  
Eichmueller S., *Proc. Natl. Acad. Sci. U.S.A.* 98:629-634(2001).  
Nagase T., *DNA Res.* 3:321-329(1996).



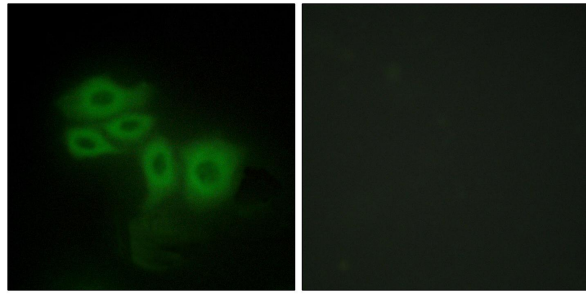
Peptide - +

Immunohistochemistry analysis of paraffin-embedded human skeletal muscle tissue using SLK antibody.



Peptide - +

Western blot analysis of extracts from COLO205 cells, using SLK antibody.



Peptide

-

+

Immunofluorescence analysis of HepG2 cells, using SLK antibody.