



**Web:** [www.anbobio.com](http://www.anbobio.com)  
[www.dijibio.com](http://www.dijibio.com)  
**Order:** [order@dijibio.com](mailto:order@dijibio.com)  
**Tel:** (86) 519 8805 0026

## CCR7 Antibody [#G053]

**Catalog Number:** G053

**Concentration:** 1mg/ml

**Swiss-Prot No.:** P32248

**Other Names:** BLR2; C-C chemokine receptor type 7; C-C CKR-7; CC-CKR-7; CCR-7; CMKBR7; EB11; EBV-induced G-protein coupled receptor 1; MIP-3 beta receptor

**Storage/Stability:** Store at -20°C/1 year

**Form of Antibody:** Rabbit IgG in phosphate buffered saline (without Mg<sup>2+</sup> and Ca<sup>2+</sup>), pH 7.4, 150mM NaCl, 0.02% sodium azide and 50% glycerol.

**Immunogen:** The antiserum was produced against synthesized peptide derived from internal of human

CCR7.

**Purification:** The antibody was affinity-purified from rabbit antiserum by affinity-chromatography using epitope-specific immunogen.

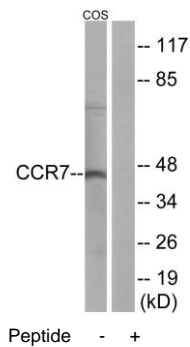
**Specificity:** CCR7 antibody detects endogenous levels of total CCR7 protein.

**Reactivity:** Human

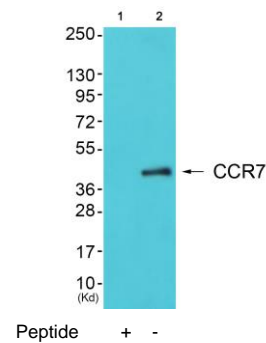
**Applications:** WB: 1:500~1:3000 IF: 1:100~1:500  
ELISA: 1:40000

**References:**

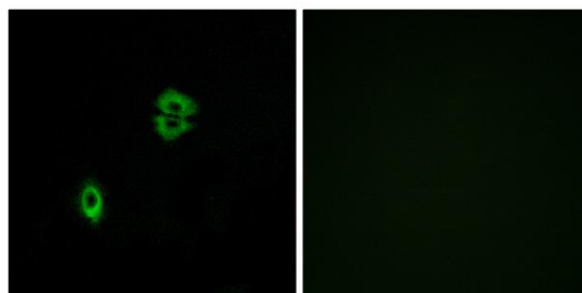
Birkenbach M.P., J. Virol. 67:2209-2220(1993).  
Schweickart V.L., Genomics 23:643-650(1994).  
Imami K., Anal. Sci. 24:161-166(2008).



Western blot analysis of extracts from COS-7 cells, using CCR7 antibody.



Western blot analysis of extracts from COLO cells, using CCR7 antibody.



Immunofluorescence analysis of A549 cells, using CCR7 antibody.

**For Research Use Only**