



**Web:** [www.anbobio.com](http://www.anbobio.com)  
[www.dijibio.com](http://www.dijibio.com)  
**Order:** [order@dijibio.com](mailto:order@dijibio.com)  
**Tel:** +86 519 8805 0026

## GPR116 Antibody [#G124]

**Catalog Number:** G124

**Concentration:** 1mg/ml

**Swiss-Prot No.:** Q8IZF2

**Other Names:** Probable G-protein coupled receptor 116; GPR116; KIAA0758

**Storage/Stability:** Store at -20°C/1 year

**Form of Antibody:** Rabbit IgG in phosphate buffered saline (without Mg<sup>2+</sup> and Ca<sup>2+</sup>), pH 7.4, 150mM NaCl, 0.02% sodium azide and 50% glycerol.

**Immunogen:** The antiserum was produced against synthesized peptide derived from internal of human GPR116.

**Purification:** The antibody was affinity-purified from rabbit antiserum by affinity-chromatography using

epitope-specific immunogen.

**Specificity:** GPR116 antibody detects endogenous levels of total GPR116 protein.

**Reactivity:** Human (Identities = 100%, Positives = 100%);  
Mouse (Identities = 100%, Positives = 100%);  
Rat (Identities = 100%, Positives = 100%)

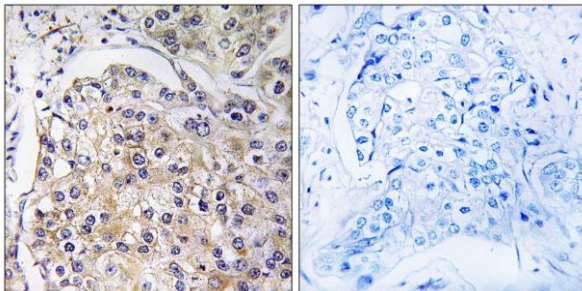
**Applications:** IHC: 1:50~1:100 IF: 1:100~1:500  
ELISA: 1:40000

**References:**

Fredriksson R., FEBS Lett. 531:407-414(2002).

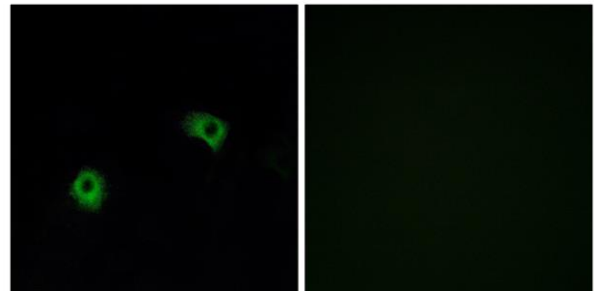
Bonner T.I., Submitted (DEC-2003) to the EMBL/GenBank/DDBJ databases.

Nagase T., DNA Res. 5:355-364(1998).



Peptide - +

Immunohistochemistry analysis of paraffin-embedded human breast carcinoma tissue using GPR116 antibody.



Peptide - +

Immunofluorescence analysis of A549 cells, using GPR116 antibody.