



**Web:** [www.anbobio.com](http://www.anbobio.com)  
[www.dijibio.com](http://www.dijibio.com)  
**Order:** [order@dijibio.com](mailto:order@dijibio.com)  
**Tel:** +86 519 8805 0026

## GPR120 Antibody [#G127]

**Catalog Number:** G127

**Concentration:** 1mg/ml

**Swiss-Prot No.:** Q5NUL3

**Other Names:** G-protein coupled receptor 120; G-protein coupled receptor PGR4; G-protein coupled receptor GT01; G-protein coupled receptor 129; GPR129, PGR4

**Storage/Stability:** Store at -20°C/1 year

**Form of Antibody:** Rabbit IgG in phosphate buffered saline (without Mg<sup>2+</sup> and Ca<sup>2+</sup>), pH 7.4, 150mM NaCl, 0.02% sodium azide and 50% glycerol.

**Immunogen:** The antiserum was produced against synthesized peptide derived from internal of human GPR120.

**Purification:** The antibody was affinity-purified from rabbit antiserum by affinity-chromatography using epitope-specific immunogen.

**Specificity:** GPR120 antibody detects endogenous levels of total GPR120 protein.

**Reactivity:** Human, Mouse, Rat

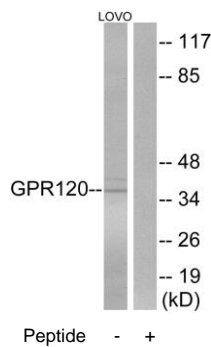
**Applications:** WB: 1:500~1:3000 IF: 1:100~1:500  
ELISA: 1:1000

**References:**

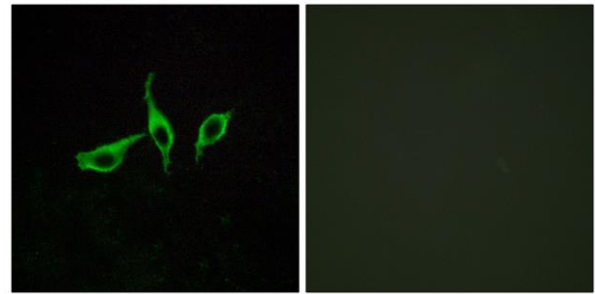
Fredriksson R., FEBS Lett. 554:381-388(2003).

Hirasawa A., Nat. Med. 11:90-94(2005).

Deloukas P., Nature 429:375-381(2004).



Western blot analysis of extracts from LOVO cells, using GPR120 antibody.



Immunofluorescence analysis of LOVO cells, using GPR120 antibody.