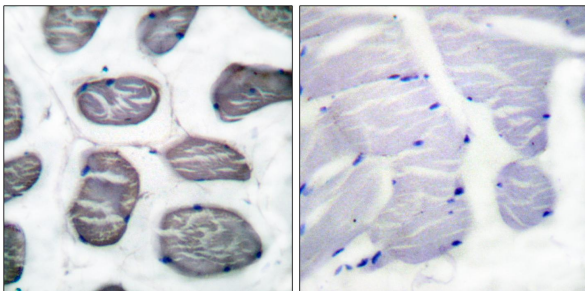




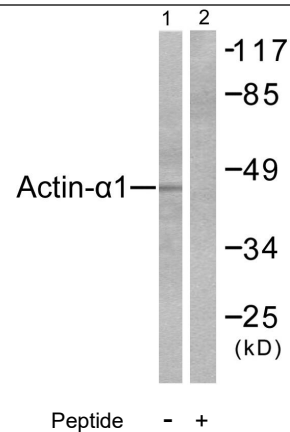
Web: [www.anbobio.com](http://www.anbobio.com)  
[www.dijibio.com](http://www.dijibio.com)  
Order: [order@dijibio.com](mailto:order@dijibio.com)  
Tel: (86) 519 8805 0026

## Actin- $\alpha$ -1 Antibody [#C0121]

- Catalog Number:** C0121  
**Amount:** 50 $\mu$ g/50 $\mu$ l, 100 $\mu$ g/100 $\mu$ l, 200 $\mu$ g/200 $\mu$ l  
**Swiss-Prot No. :** P68133  
**All Names:** ACTA, ACTA1, ACTS, Actin, alpha skeletal muscle, Alpha-actin 1  
**Form of Antibody:** Rabbit IgG in phosphate buffered saline (without Mg<sup>2+</sup> and Ca<sup>2+</sup>), pH 7.4, 150mM NaCl, 0.02% sodium azide and 50% glycerol.  
**Storage/Stability:** Store at -20°C/1 year  
**Immunogen:** The antiserum was produced against synthesized peptide derived from human Actin- $\alpha$ -1.  
**Purification:** The antibody was affinity-purified from rabbit antiserum by affinity-chromatography using epitope-specific immunogen.  
**Specificity/Sensitivity:** Actin- $\alpha$ -1 antibody detects endogenous levels of total Actin- $\alpha$ -1 protein.  
**Reactivity:** Human, Mouse, Rat  
**Applications:** WB: 1:500~1:3000      IHC: 1:50~1:100  
ELISA: 1:20000  
**References:** Atsushi Masamune, J. Pharmacol. Exp. Ther., Jan 2003; 304  
Alicia Algeciras-Schimmich, PNAS, Sep 2003; 100: 11445.  
Richard D. Peavy, Mol. Pharmacol., Jun 2005; 67: 2102 - 2114.  
Xiaobing Deng, J. Biol. Chem., Feb 2005; 280: 4894 - 4905.



Peptide                      -                      +  
Immunohistochemical analysis of paraffin-embedded human muscle tissue using Actin- $\alpha$ -1 antibody.



Western blot analysis of extracts from LOVO cells, using Actin- $\alpha$ -1 antibody.

**For Research Use Only**