



**Web:** [www.anbobio.com](http://www.anbobio.com)  
[www.dijibio.com](http://www.dijibio.com)  
**Order:** [order@dijibio.com](mailto:order@dijibio.com)  
**Tel:** +86 519 8805 0026

## GPR18 Antibody [#G147]

**Catalog Number:** G147

**Concentration:** 1mg/ml

**Swiss-Prot No.:** Q14330

**Other Names:** N-arachidonyl glycine receptor; NAGly receptor; G-protein coupled receptor 18; GPCRW

**Storage/Stability:** Store at -20°C/1 year

**Form of Antibody:** Rabbit IgG in phosphate buffered saline (without Mg<sup>2+</sup> and Ca<sup>2+</sup>), pH 7.4, 150mM NaCl, 0.02% sodium azide and 50% glycerol.

**Immunogen:** The antiserum was produced against synthesized peptide derived from internal of human GPR18.

**Purification:** The antibody was affinity-purified from

rabbit antiserum by affinity-chromatography using epitope-specific immunogen.

**Specificity:** GPR18 antibody detects endogenous levels of total GPR18 protein.

**Reactivity:** Human

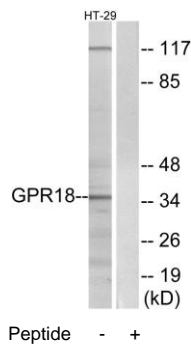
**Applications:** WB: 1:500~1:3000 IF: 1:100~1:500  
ELISA: 1:10000

**References:**

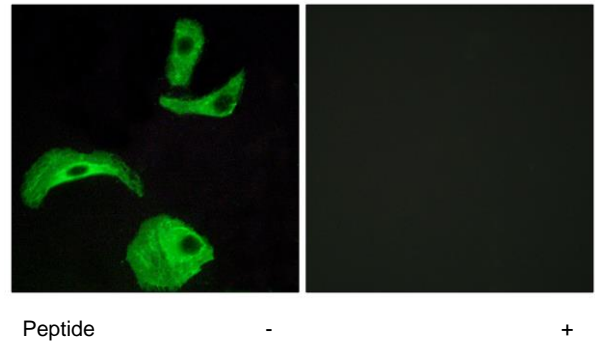
Gantz I., Genomics 42:462-466(1997).

Kohno M., Biochem. Biophys. Res. Commun. 347:827-832(2006).

Dunham A., Nature 428:522-528(2004).



Western blot analysis of extracts from HT-29 cells, using GPR18 antibody.



Immunofluorescence analysis of HeLa cells, using GPR18 antibody.