



**Web:** [www.anbobio.com](http://www.anbobio.com)  
[www.dijibio.com](http://www.dijibio.com)  
**Order:** [order@dijibio.com](mailto:order@dijibio.com)  
**Tel:** +86 519 8805 0026

## CHRM2 Antibody [#G206]

**Catalog Number:** G206

**Concentration:** 1mg/ml

**Swiss-Prot No.:** P08172

**Other Names:** ACM2; muscarinic acetylcholine receptor M2

**Storage/Stability:** Store at -20°C/1 year

**Form of Antibody:** Rabbit IgG in phosphate buffered saline (without Mg<sup>2+</sup> and Ca<sup>2+</sup>), pH 7.4, 150mM NaCl, 0.02% sodium azide and 50% glycerol.

**Immunogen:** The antiserum was produced against synthesized peptide derived from internal of human CHRM2.

**Purification:** The antibody was affinity-purified from rabbit antiserum by affinity-chromatography using epitope-specific immunogen.

**Specificity:** CHRM2 antibody detects endogenous levels of total CHRM2 protein.

**Reactivity:** Human, Mouse, Rat

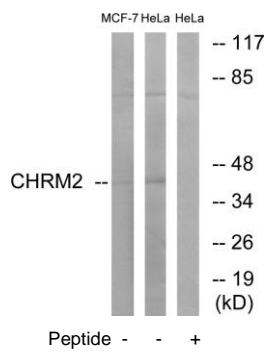
**Applications:** WB: 1:500~1:3000 IF: 1:100~1:500  
ELISA: 1:5000

**References:**

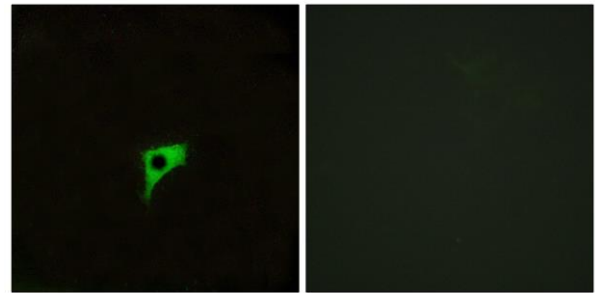
Bonner T.I., Science 237:527-532(1987).

Peralta E.G., EMBO J. 6:3923-3929(1987).

Wang J.C., Hum. Mol. Genet. 13:1903-1911(2004).



Western blot analysis of extracts from MCF-7 cells and HeLa cells, using CHRM2 antibody.



Immunofluorescence analysis of LOVO cells, using CHRM2 antibody.