



Web: www.anbobio.com
www.dijibio.com
Order: order@dijibio.com
Tel: (86) 519 8805 0026

NKX6.3 Antibody [#C10009]

Catalog Number: C10009

Concentration: 1mg/ml

Swiss-Prot No.: A6NJ46

Other Names: NKX63, Homeobox protein Nkx-6.3, NKX6-3

Storage/Stability: Store at -20°C/1 year

Form of Antibody: Rabbit IgG in phosphate buffered saline (without Mg²⁺ and Ca²⁺), pH 7.4, 150mM NaCl, 0.02% sodium azide and 50% glycerol.

Immunogen: The antiserum was produced against synthesized peptide derived from internal of human NKX6.3.

Purification: The antibody was affinity-purified from

rabbit antiserum by affinity-chromatography using epitope-specific immunogen.

Specificity: NKX6.3 antibody detects endogenous levels of total NKX6.3 protein.

Reactivity: Human, Mouse

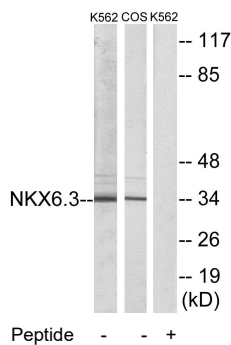
Applications: WB: 1:500~1:3000 IF: 1:100~1:500
ELISA: 1:5000

References:

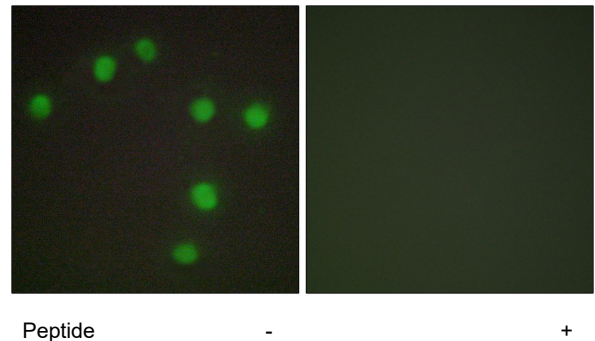
Ensembl, Submitted (SEP-2007) to UniProtKB.

Nusbaum C., Nature 439:331-335(2006).

Mural R.J., Submitted (SEP-2005) to the EMBL/GenBank/DDBJ databases.



Western blot analysis of extracts from K562 cells and COS-7 cells, using NKX6.3 antibody.



Immunofluorescence analysis of HUVEC cells, using NKX6.3 antibody.