



**Web:** [www.anbobio.com](http://www.anbobio.com)  
[www.dijibio.com](http://www.dijibio.com)  
**Order:** [order@dijibio.com](mailto:order@dijibio.com)  
**Tel:** (86) 519 8805 0026

## PDLIM1 Antibody [#C10012]

**Catalog Number:** C10012

**Concentration:** 1mg/ml

**Swiss-Prot No.:** O00151

**Other Names:** C-terminal LIM domain protein 1, CLP36, Elfin, LIM domain protein CLP-36, PDL1, PDLI1, PDLIM1, PDZ and LIM domain protein 1

**Storage/Stability:** Store at -20°C/1 year

**Form of Antibody:** Rabbit IgG in phosphate buffered saline (without Mg<sup>2+</sup> and Ca<sup>2+</sup>), pH 7.4, 150mM NaCl, 0.02% sodium azide and 50% glycerol.

**Immunogen:** The antiserum was produced against synthesized peptide derived from internal of human PDLIM1.

**Purification:** The antibody was affinity-purified from rabbit antiserum by affinity-chromatography using epitope-specific immunogen.

**Specificity:** PDLIM1 antibody detects endogenous levels of total PDLIM1 protein.

**Reactivity:** Human, Mouse, Rat

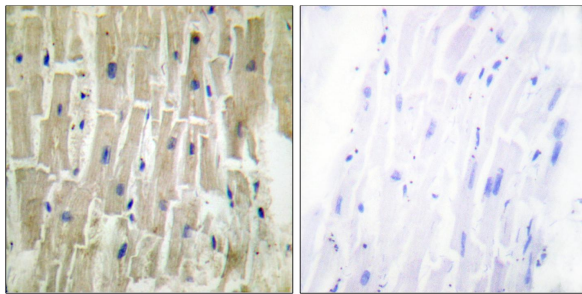
**Applications:** WB: 1:500~1:3000 IHC: 1:50~1:100  
IF: 1:100~1:500 ELISA: 1:5000

**References:**

Kotaka M., J. Cell. Biochem. 72:279-285(1999).

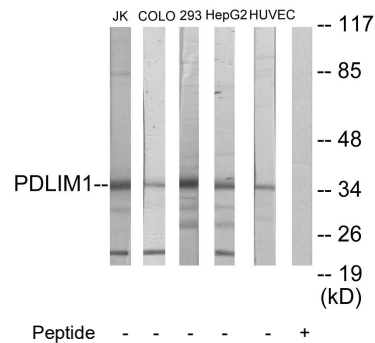
Bauer K., Blood 96:4236-4245(2000).

Deloukas P., Nature 429:375-381(2004).



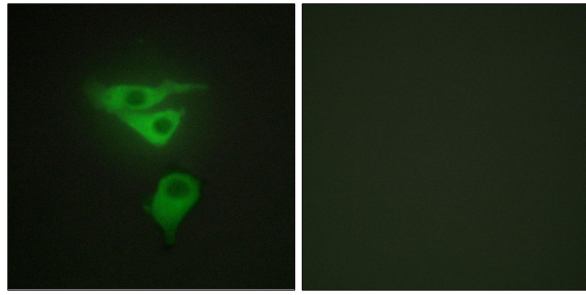
Peptide - +

Immunohistochemistry analysis of paraffin-embedded human heart tissue, using PDLIM1 antibody.



Western blot analysis of extracts from Jurkat cells, COLO205 cells, 293 cells, HepG2 cells and HUVEC cells, using PDLIM1 antibody.

**For Research Use Only**



Peptide

-

+

Immunofluorescence analysis of HepG2 cells, using  
PDLIM1 antibody.