



**Web:** [www.anbobio.com](http://www.anbobio.com)  
[www.dijibio.com](http://www.dijibio.com)  
**Order:** [order@dijibio.com](mailto:order@dijibio.com)  
**Tel:** (86) 519 8805 0026

## IF2B3 Antibody [#C10025]

**Catalog Number:** C10025

**Concentration:** 1mg/ml

**Swiss-Prot No.:** O00425

**Other Names:** cancer/testis antigen 98; CT98; DKFZp686F1078; hKOC; IF2B3; IGF II mRNA binding protein 3; IGF-II mRNA-binding protein 3; IGF2 mRNA-binding protein 3; IGF2BP3; IMP-3; IMP3; insulin-like growth factor 2 mRNA binding protein 3; Insulin-like growth factor 2 mRNA-binding protein 3; KH domain containing protein overexpressed in cancer; KH domain-containing protein overexpressed in cancer; KOC1; VICKZ family member 3; VICKZ3

**Storage/Stability:** Store at -20°C/1 year

**Form of Antibody:** Rabbit IgG in phosphate buffered saline (without Mg<sup>2+</sup> and Ca<sup>2+</sup>), pH 7.4, 150mM NaCl, 0.02% sodium azide and 50% glycerol.

**Immunogen:** The antiserum was produced against synthesized peptide derived from N-terminal of human IGF2BP3.

**Purification:** The antibody was affinity-purified from rabbit antiserum by affinity-chromatography using epitope-specific immunogen.

**Specificity:** IF2B3 antibody detects endogenous levels of total IGF2BP3 protein.

**Reactivity:** Human; Mouse

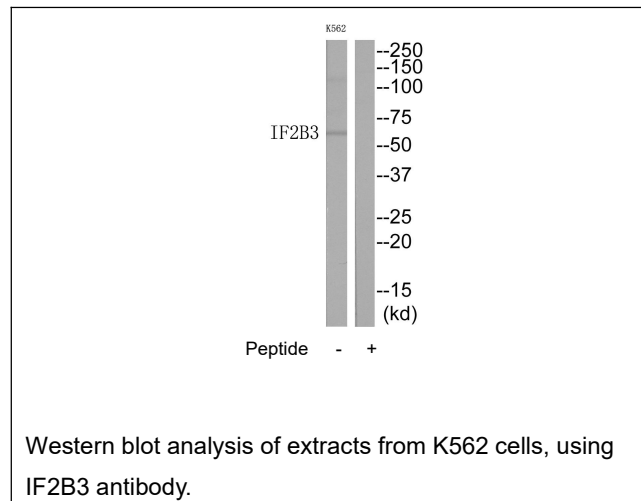
**Applications:** WB: 1:500~1:3000 ELISA: 1:10000

**References:**

Mueller-Pillasch F., *Oncogene* 14:2729-2733(1997).

Bechtel S., *BMC Genomics* 8:399-399(2007).

Hillier L.W., *Nature* 424:157-164(2003).



**For Research Use Only**