



Web: www.anbobio.com
www.dijibio.com
Order: order@dijibio.com
Tel: (86) 519 8805 0026

CTRO Antibody [#C10038]

Catalog Number: C10038

Concentration: 1mg/ml

Swiss-Prot No.: O14578

Other Names: Citron Rho-interacting kinase, CRIK, Rho-interacting, serine/threonine-protein kinase 21, CIT, KIAA0949, STK21

Storage/Stability: Store at -20°C/1 year

Form of Antibody: Rabbit IgG in phosphate buffered saline (without Mg²⁺ and Ca²⁺), pH 7.4, 150mM NaCl, 0.02% sodium azide and 50% glycerol.

Immunogen: The antiserum was produced against synthesized peptide derived from internal of human CTRO.

Purification: The antibody was affinity-purified from

rabbit antiserum by affinity-chromatography using epitope-specific immunogen.

Specificity: CTRO antibody detects endogenous levels of total CTRO protein.

Reactivity: Human (Identities = 100%, Positives = 100%);
Mouse (Identities = 100%, Positives = 100%)

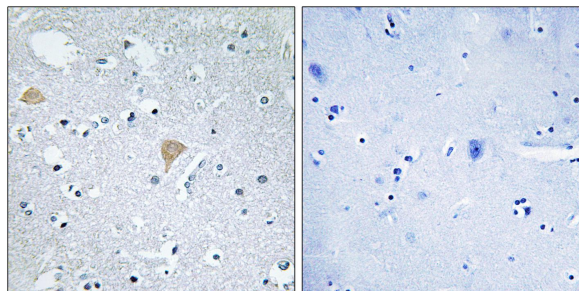
Applications: IHC: 1:50~1:100 IF: 1:100~1:500
ELISA: 1:40000

References:

Nagase T., DNA Res. 6:63-70(1999).

Scherer S.E., Nature 440:346-351(2006).

Gruneberg U., J. Cell Biol. 172:363-372(2006).



Peptide - +
Immunohistochemistry analysis of paraffin-embedded human brain tissue using CTRO antibody.