



**Web:** [www.anbobio.com](http://www.anbobio.com)  
[www.dijibio.com](http://www.dijibio.com)  
**Order:** [order@dijibio.com](mailto:order@dijibio.com)  
**Tel:** (86) 519 8805 0026

## KNTC2 Antibody [#C10051]

**Catalog Number:** C10051

**Concentration:** 1mg/ml

**Swiss-Prot No.:** O14777

**Other Names:** HEC1, HEC, Highly expressed in cancer, rich in leucine heptad repeats, KNTC2, NDC80, Retinoblastoma-associated protein HEC, TID3, kinetochore associated 2

**Storage/Stability:** Store at -20°C/1 year

**Form of Antibody:** Rabbit IgG in phosphate buffered saline (without Mg<sup>2+</sup> and Ca<sup>2+</sup>), pH 7.4, 150mM NaCl, 0.02% sodium azide and 50% glycerol.

**Immunogen:** The antiserum was produced against synthesized peptide derived from internal of human KNTC2.

**Purification:** The antibody was affinity-purified from rabbit antiserum by affinity-chromatography using epitope-specific immunogen.

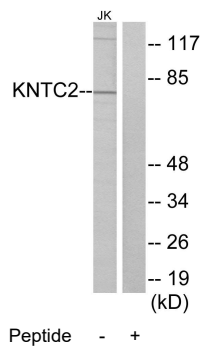
**Specificity:** KNTC2 antibody detects endogenous levels of total KNTC2 protein.

**Reactivity:** Human, Mouse

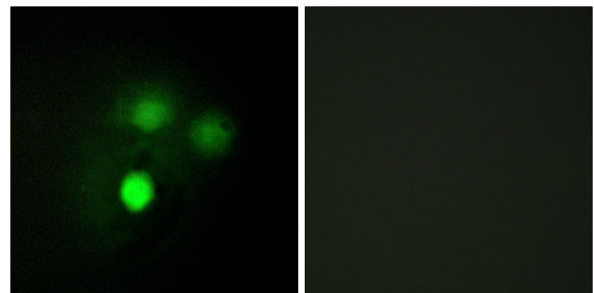
**Applications:** WB: 1:500~1:3000 IF: 1:100~1:500  
ELISA: 1:20000

**References:**

Chen Y., Mol. Cell. Biol. 17:6049-6056(1997).  
The MGC Project Team, Genome Res. 14:2121-2127(2004).  
Zheng L., Mol. Cell. Biol. 19:5417-5428(1999).



Western blot analysis of extracts from Jurkat cells, using KNTC2 antibody.



Immunofluorescence analysis of HUVEC cells, using KNTC2 antibody.