



Web: [www.anbobio.com](http://www.anbobio.com)  
[www.dijibio.com](http://www.dijibio.com)  
Order: [order@dijibio.com](mailto:order@dijibio.com)  
Tel: (86) 519 8805 0026

## BCKD Antibody [#C10056]

**Catalog Number:** C10056

**Concentration:** 1mg/ml

**Swiss-Prot No.:** O14874

**Other Names:** [3-methyl-2-oxobutanoate dehydrogenase [lipoamide]] kinase, mitochondrial [Precursor], EC 2.7.11.4, Branched-chain alpha-ketoacid dehydrogenase kinase, BCKDHKIN, BCKD-kinase, BCKDK

**Storage/Stability:** Store at -20°C/1 year

**Form of Antibody:** Rabbit IgG in phosphate buffered saline (without Mg<sup>2+</sup> and Ca<sup>2+</sup>), pH 7.4, 150mM NaCl, 0.02% sodium azide and 50% glycerol.

**Immunogen:** The antiserum was produced against synthesized peptide derived from Internal of human BCKD.

**Purification:** The antibody was affinity-purified from rabbit antiserum by affinity-chromatography using epitope-specific immunogen.

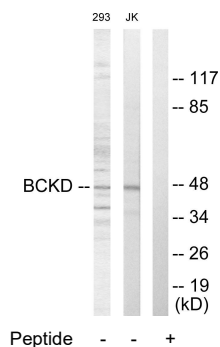
**Specificity:** BCKD antibody detects endogenous levels of total BCKD protein.

**Reactivity:** Human, Mouse, Rat

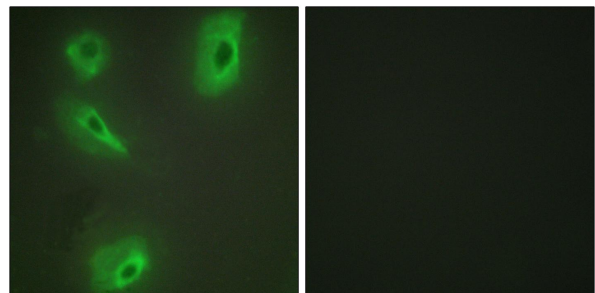
**Applications:** WB: 1:500~1:3000 IF: 1:100~1:500  
ELISA: 1:20000

**References:**

Chuang J.C., Submitted (SEP-1997) to the EMBL/GenBank/DDBJ databases.  
The MGC Project Team, Genome Res. 14:2121-2127(2004).



Western blot analysis of extracts from 293 cells and Jurkat cells, using BCKD antibody.



Immunofluorescence analysis of HeLa cells, using BCKD antibody.