



Web: www.anbobio.com
www.dijibio.com
Order: order@dijibio.com
Tel: (86) 519 8805 0026

AKAP8 Antibody [#C10121]

Catalog Number: C10121

Concentration: 1mg/ml

Swiss-Prot No.: O43823

Other Names: A-kinase anchor protein 8, A-kinase anchor protein 95 kDa, AKA8, AKAP 95, AKAP95

Storage/Stability: Store at -20°C/1 year

Form of Antibody: Rabbit IgG in phosphate buffered saline (without Mg²⁺ and Ca²⁺), pH 7.4, 150mM NaCl, 0.02% sodium azide and 50% glycerol.

Immunogen: The antiserum was produced against synthesized peptide derived from internal of human AKAP8.

Purification: The antibody was affinity-purified from

rabbit antiserum by affinity-chromatography using epitope-specific immunogen.

Specificity: AKAP8 antibody detects endogenous levels of total AKAP8 protein.

Reactivity: Human, Mouse, Rat

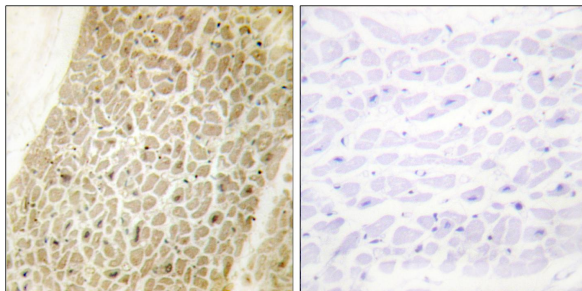
Applications: WB: 1:500~1:3000 IHC: 1:50~1:100
IF: 1:100~1:500 ELISA: 1:20000

References:

Eide T., Exp. Cell Res. 238:305-316(1998).

Grimwood J., Nature 428:529-535(2004).

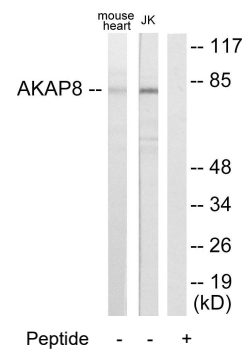
Beausoleil S.A., Proc. Natl. Acad. Sci. U.S.A. 101:12130-12135(2004).



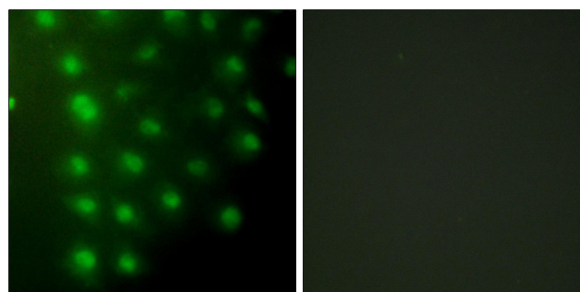
Peptide -

+

Immunohistochemistry analysis of paraffin-embedded human heart tissue using AKAP8 antibody.



Western blot analysis of extracts from mouse heart cells and Jurkat cells, using AKAP8 antibody.



Peptide -

+

Immunofluorescence analysis of HUVEC cells, using AKAP8 antibody.

