



Web: www.anbobio.com
www.dijibio.com
Order: order@dijibio.com
Tel: (86) 519 8805 0026

ZEB2 Antibody [#C10133]

Catalog Number: C10133

Concentration: 1mg/ml

Swiss-Prot No.: O60315

Other Names: SIP-1; SIP1; Smad interacting-protein 1; Smad-interacting 1; SMADIP1; ZEB2; ZFX1B; zinc finger E-box-binding 2; zinc finger homeobox 1b

Storage/Stability: Store at -20°C/1 year

Form of Antibody: Rabbit IgG in phosphate buffered saline (without Mg²⁺ and Ca²⁺), pH 7.4, 150mM NaCl, 0.02% sodium azide and 50% glycerol.

Immunogen: The antiserum was produced against synthesized peptide derived from internal of human ZEB2.

Purification: The antibody was affinity-purified from rabbit antiserum by affinity-chromatography using epitope-specific immunogen.

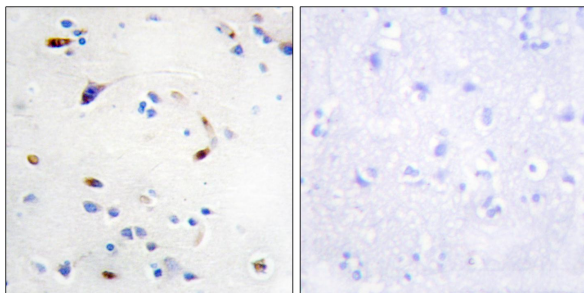
Specificity: ZEB2 antibody detects endogenous levels of total ZEB2 protein.

Reactivity: Human, Mouse

Applications: WB: 1:500~1:3000 IHC: 1:50~1:100
ELISA: 1:10000

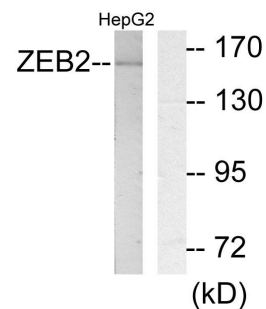
References:

Cacheux V., Hum. Mol. Genet. 10:1503-1510(2001).
Wakamatsu N., Nat. Genet. 27:369-370(2001).
Nagase T., DNA Res. 5:31-39(1998).



Peptide - +

Immunohistochemistry analysis of paraffin-embedded human brain tissue, using ZEB2 antibody.



Peptide - +

Western blot analysis of extracts from HepG2 cells, using ZEB2 antibody.

For Research Use Only