



Web: www.anbobio.com
www.dijibio.com
Order: order@dijibio.com
Tel: (86) 519 8805 0026

ZIC1/2/3 Antibody [#C10137]

Catalog Number: C10137

Concentration: 1mg/ml

Swiss-Prot No.: Q15915

Other Names: Zinc finger protein ZIC 1, Zinc finger protein of the cerebellum 1, ZIC1

Storage/Stability: Store at -20°C/1 year

Form of Antibody: Rabbit IgG in phosphate buffered saline (without Mg²⁺ and Ca²⁺), pH 7.4, 150mM NaCl, 0.02% sodium azide and 50% glycerol.

Immunogen: The antiserum was produced against synthesized peptide derived from internal of human

ZIC1/2/3.

Purification: The antibody was affinity-purified from rabbit antiserum by affinity-chromatography using epitope-specific immunogen.

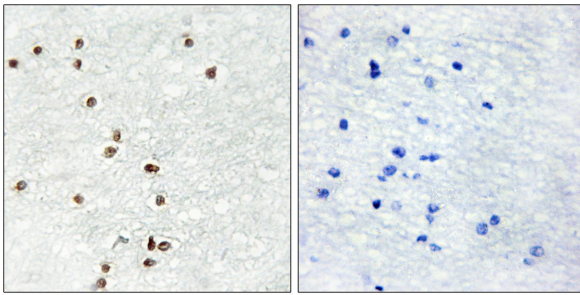
Specificity: ZIC1/2/3 antibody detects endogenous levels of total ZIC1/2/3 protein.

Reactivity: Human, Mouse

Applications: WB: 1:500~1:3000 IHC: 1:50~1:100
ELISA: 1:20000

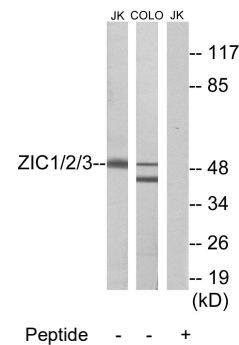
References:

Yokota N., Cancer Res. 56:377-383(1996).



Peptide - +

Immunohistochemistry analysis of paraffin-embedded human brain tissue using ZIC1/2/3 antibody.



Western blot analysis of extracts from Jurkat cells and COLO cells, using ZIC1/2/3 antibody.