



Web: [www.anbobio.com](http://www.anbobio.com)  
[www.dijibio.com](http://www.dijibio.com)  
Order: [order@dijibio.com](mailto:order@dijibio.com)  
Tel: (86) 519 8805 0026

## PDZD2 Antibody [#C10065]

**Catalog Number:** C10065

**Concentration:** 1mg/ml

**Swiss-Prot No.:** O15018

**Other Names:** PDZ domain-containing protein 2, PDZ domain-containing protein 3, Activated in prostate cancer protein, Processed PDZ domain-containing protein 2, PDZD2, AIPC, KIAA0300, PDZK3

**Storage/Stability:** Store at -20°C/1 year

**Form of Antibody:** Rabbit IgG in phosphate buffered saline (without Mg<sup>2+</sup> and Ca<sup>2+</sup>), pH 7.4, 150mM NaCl, 0.02% sodium azide and 50% glycerol.

**Immunogen:** The antiserum was produced against synthesized peptide derived from internal of human PDZD2.

**Purification:** The antibody was affinity-purified from rabbit antiserum by affinity-chromatography using epitope-specific immunogen.

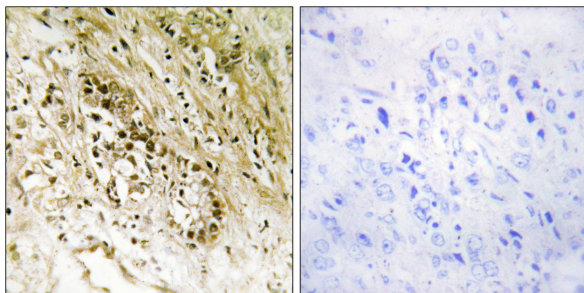
**Specificity:** PDZD2 antibody detects endogenous levels of total PDZD2 protein.

**Reactivity:** Human (Identities = 100%, Positives = 100%);  
Mouse (Identities = 100%, Positives = 100%);  
Rat (Identities = 100%, Positives = 100%)

**Applications:** IHC: 1:50~1:100 IF: 1:100~1:500  
ELISA: 1:5000

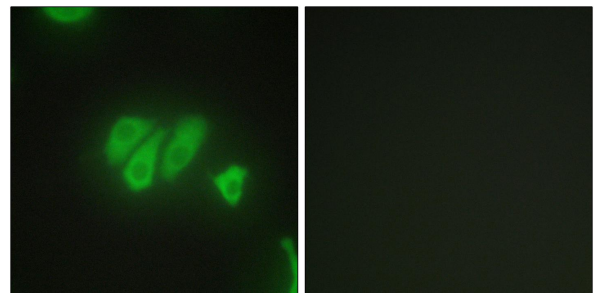
**References:**

Chaib H., Cancer Res. 61:2390-2394(2001).  
Nagase T., DNA Res. 4:141-150(1997).



Peptide - +

Immunohistochemistry analysis of paraffin-embedded human prostate carcinoma tissue, using PDZD2 antibody.



Peptide - +

Immunofluorescence analysis of HepG2 cells, using PDZD2 antibody.