



Web: www.anbobio.com
www.dijibio.com
Order: order@dijibio.com
Tel: (86) 519 8805 0026

EPHB6 Antibody [#C10075]

Catalog Number: C10075

Concentration: 1mg/ml

Swiss-Prot No.: O15197

Other Names: EPB6, Ephrin type-B receptor 6 precursor, HEP, Tyrosine-protein kinase-defective receptor EPH-6

Storage/Stability: Store at -20°C/1 year

Form of Antibody: Rabbit IgG in phosphate buffered saline (without Mg²⁺ and Ca²⁺), pH 7.4, 150mM NaCl, 0.02% sodium azide and 50% glycerol.

Immunogen: The antiserum was produced against synthesized peptide derived from internal of human EPHB6.

Purification: The antibody was affinity-purified from

rabbit antiserum by affinity-chromatography using epitope-specific immunogen.

Specificity: EPHB6 antibody detects endogenous levels of total EPHB6 protein.

Reactivity: Human, Mouse, Rat

Applications: WB: 1:500~1:3000 IHC: 1:50~1:100

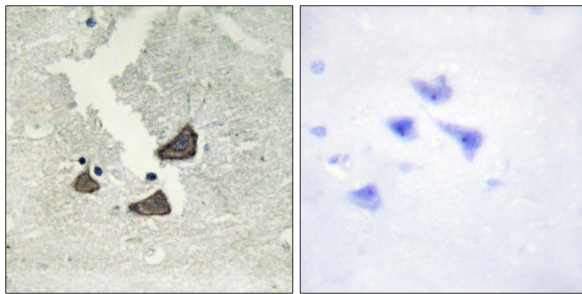
IF: 1:100~1:500 ELISA: 1:1000

References:

Matsuoka H., Biochem. Biophys. Res. Commun. 235:487-492(1997).

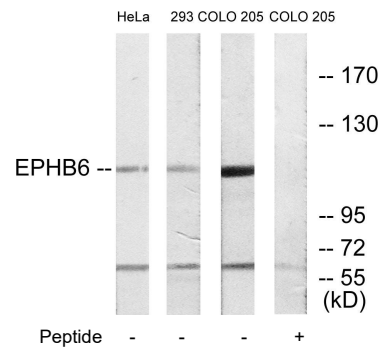
Hillier L.W., Nature 424:157-164(2003).

Zhang Z., Protein Sci. 13:2819-2824(2004).

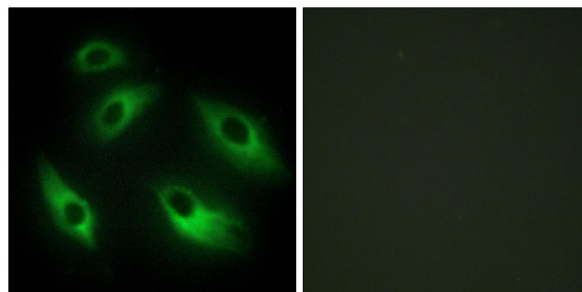


Peptide - +

Immunohistochemistry analysis of paraffin-embedded human brain tissue using EPHB6 antibody.



Western blot analysis of extracts from HeLa cells, 293 cells and COLO cells, using EPHB6 antibody.



Peptide - +

Immunofluorescence analysis of HeLa cells, using EPHB6 antibody.