



Web: [www.anbobio.com](http://www.anbobio.com)  
[www.dijibio.com](http://www.dijibio.com)  
Order: [order@dijibio.com](mailto:order@dijibio.com)  
Tel: (86) 519 8805 0026

## TRI18 Antibody [#C10078]

**Catalog Number:** C10078

**Concentration:** 1mg/ml

**Swiss-Prot No.:** O15344

**Other Names:** Midline-1, EC 6.3.2.-, Tripartite motif-containing protein 18, Putative transcription factor XPRF, Midin, RING finger protein 59, Midline 1 RING finger protein, MID1, FXY, RNF59, TRIM18, XPRF

**Storage/Stability:** Store at -20°C/1 year

**Form of Antibody:** Rabbit IgG in phosphate buffered saline (without Mg<sup>2+</sup> and Ca<sup>2+</sup>), pH 7.4, 150mM NaCl, 0.02% sodium azide and 50% glycerol.

**Immunogen:** The antiserum was produced against synthesized peptide derived from internal of human

TRI18.

**Purification:** The antibody was affinity-purified from rabbit antiserum by affinity-chromatography using epitope-specific immunogen.

**Specificity:** TRI18 antibody detects endogenous levels of total TRI18 protein.

**Reactivity:** Human, Mouse, Rat

**Applications:** WB: 1:500~1:3000 IHC: 1:50~1:100

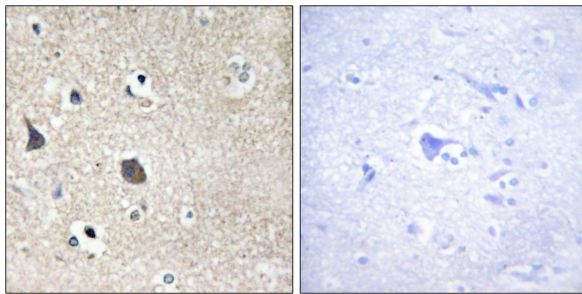
IF: 1:100~1:500 ELISA: 1:40000

**References:**

Quaderi N.A., Nat. Genet. 17:285-291(1997).

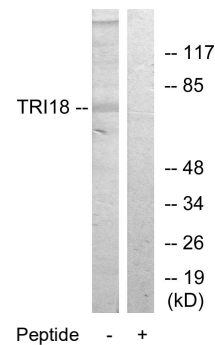
Perry J., Hum. Mol. Genet. 7:299-305(1998).

Van den Veyver I.B., Genomics 51:251-261(1998).

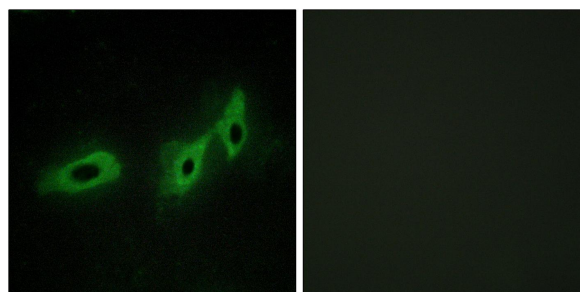


Peptide - +

Immunohistochemistry analysis of paraffin-embedded human brain tissue using TRI18 antibody.



Western blot analysis of extracts from 293 cells, using TRI18 antibody.



Peptide - +

Immunofluorescence analysis of HeLa cells, using TRI18 antibody.