



Web: [www.anbobio.com](http://www.anbobio.com)  
[www.dijibio.com](http://www.dijibio.com)  
Order: [order@dijibio.com](mailto:order@dijibio.com)  
Tel: (86) 519 8805 0026

## Musculin Antibody [#C10147]

**Catalog Number:** C10147

**Concentration:** 1mg/ml

**Swiss-Prot No.:** O60682

**Other Names:** Musculin, Activated B-cell factor 1, ABF-1, MSC, ABF1

**Storage/Stability:** Store at -20°C/1 year

**Form of Antibody:** Rabbit IgG in phosphate buffered saline (without Mg<sup>2+</sup> and Ca<sup>2+</sup>), pH 7.4, 150mM NaCl, 0.02% sodium azide and 50% glycerol.

**Immunogen:** The antiserum was produced against synthesized peptide derived from internal of human Musculin.

**Purification:** The antibody was affinity-purified from

rabbit antiserum by affinity-chromatography using epitope-specific immunogen.

**Specificity:** Musculin antibody detects endogenous levels of total Musculin protein.

**Reactivity:** Human, Mouse

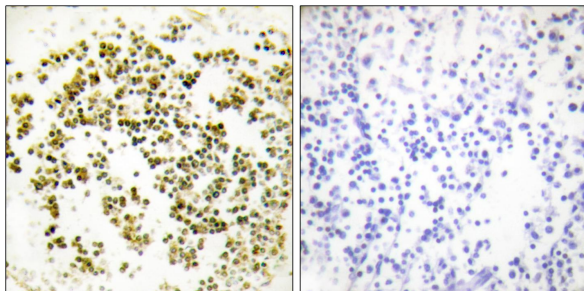
**Applications:** WB: 1:500~1:3000 IHC: 1:50~1:100  
ELISA: 1:10000

**References:**

Massari M.E., Mol. Cell. Biol. 18:3130-3139(1998).

The MGC Project Team; Genome Res. 14:2121-2127(2004).

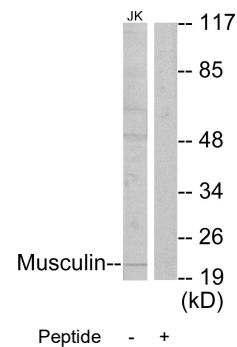
Robb L., Mech. Dev. 76:197-201(1998).



Peptide -

+

Immunohistochemistry analysis of paraffin-embedded human lymph node tissue using Musculin antibody.



Musculin--

Peptide - +

Western blot analysis of extracts from Jurkat cells, using Musculin antibody.