



Web: www.anbobio.com
www.dijibio.com
Order: order@dijibio.com
Tel: +86 519 8805 0026

CLTR1 Antibody [#G224]

Catalog Number: G224

Concentration: 1mg/ml

Swiss-Prot No.: Q9Y271

Other Names: CLTR1; CYSLT1; CYSLT1R; CYSLTR; cysteinyl leukotriene D4 receptor; cysteinyl leukotriene receptor 1; HG55; HMTMF81; LTD4 receptor

Storage/Stability: Store at -20°C/1 year

Form of Antibody: Rabbit IgG in phosphate buffered saline (without Mg²⁺ and Ca²⁺), pH 7.4, 150mM NaCl, 0.02% sodium azide and 50% glycerol.

Immunogen: The antiserum was produced against synthesized peptide derived from internal of human CLTR1.

Purification: The antibody was affinity-purified from rabbit antiserum by affinity-chromatography using epitope-specific immunogen.

Specificity: CLTR1 antibody detects endogenous levels of total CLTR1 protein.

Reactivity: Human

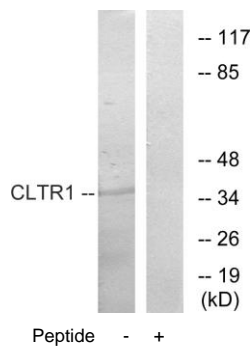
Applications: WB: 1:500~1:3000 IF: 1:100~1:500
ELISA: 1:10000

References:

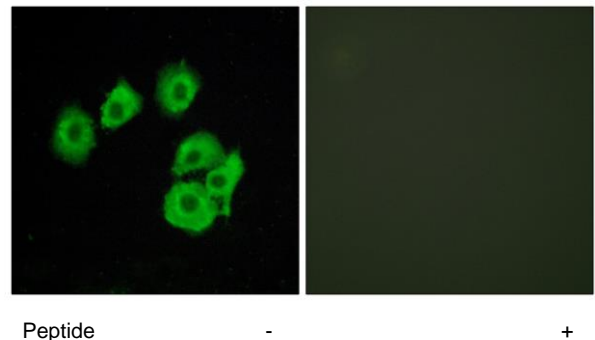
Lynch K.R., Nature 399:789-793(1999).

Sarau H.M., Mol. Pharmacol. 56:657-663(1999).

Ross M.T., Nature 434:325-337(2005).



Western blot analysis of extracts from COS7 cells, using CLTR1 antibody.



Immunofluorescence analysis of HUVEC cells, using CLTR1 antibody.