



Web: www.anbobio.com
www.dijibio.com
Order: order@dijibio.com
Tel: (86) 519 8805 0026

SIN3B Antibody [#C10163]

Catalog Number: C10163

Concentration: 1mg/ml

Swiss-Prot No.: O75182

Other Names: Paired amphipathic helix protein Sin3b, Transcriptional corepressor Sin3b, Histone deacetylase complex subunit Sin3b, SIN3B, KIAA0700

Storage/Stability: Store at -20°C/1 year

Form of Antibody: Rabbit IgG in phosphate buffered saline (without Mg²⁺ and Ca²⁺), pH 7.4, 150mM NaCl, 0.02% sodium azide and 50% glycerol.

Immunogen: The antiserum was produced against synthesized peptide derived from internal of human SIN3B.

Purification: The antibody was affinity-purified from rabbit antiserum by affinity-chromatography using epitope-specific immunogen.

Specificity: SIN3B antibody detects endogenous levels of total SIN3B protein.

Reactivity: Human

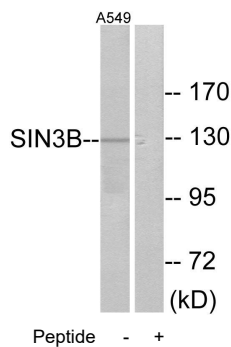
Applications: WB: 1:500~1:3000 IF: 1:100~1:500
ELISA: 1:1000

References:

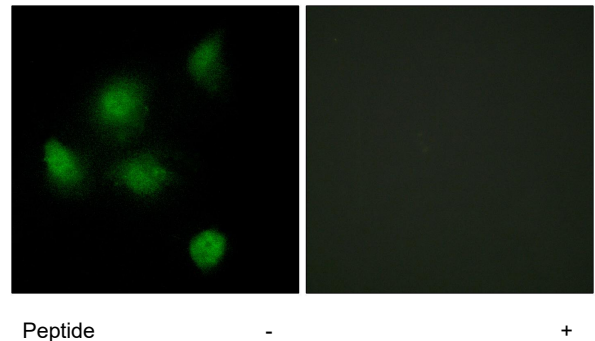
Ishikawa K., DNA Res. 5:169-176(1998).

The MGC Project Team, Genome Res. 14:2121-2127(2004).

Wysocka J., Genes Dev. 17:896-911(2003).



Western blot analysis of extracts from A549 cells, using SIN3B antibody.



Immunofluorescence analysis of HeLa cells, using SIN3B antibody.