



**Web:** [www.anbobio.com](http://www.anbobio.com)  
[www.dijibio.com](http://www.dijibio.com)  
**Order:** [order@dijibio.com](mailto:order@dijibio.com)  
**Tel:** +86 519 8805 0026

## EDG4 Antibody [#G236]

**Catalog Number:** G236

**Concentration:** 1mg/ml

**Swiss-Prot No.:** Q9HBW0

**Other Names:** EDG-4; endothelial differentiation, lysophosphatidic acid G-protein-coupled receptor, 4; G protein-coupled receptor; LPA receptor 2; LPA receptor EDG4; LPA-2; LPA2; LPAR2; lysophosphatidic acid receptor Edg-4; lysophosphatidic acid receptor EDG4

**Storage/Stability:** Store at -20°C/1 year

**Form of Antibody:** Rabbit IgG in phosphate buffered saline (without Mg<sup>2+</sup> and Ca<sup>2+</sup>), pH 7.4, 150mM NaCl, 0.02% sodium azide and 50% glycerol.

**Immunogen:** The antiserum was produced against synthesized peptide derived from internal of human

EDG4.

**Purification:** The antibody was affinity-purified from rabbit antiserum by affinity-chromatography using epitope-specific immunogen.

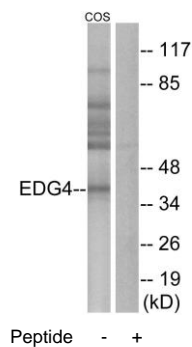
**Specificity:** EDG4 antibody detects endogenous levels of total EDG4 protein.

**Reactivity:** Human, Mouse

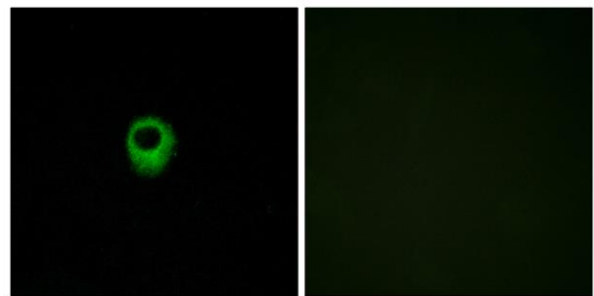
**Applications:** WB: 1:500~1:3000 IF: 1:100~1:500  
ELISA: 1:40000

**References:**

An S., J. Biol. Chem. 273:7906-7910(1998).  
Bandoh K., FEBS Lett. 478:159-165(2000).  
Grimwood J., Nature 428:529-535(2004).



Western blot analysis of extracts from COS-7 cells, using EDG4 antibody.



Immunofluorescence analysis of MCF-7 cells, using EDG4 antibody.