



Web: www.anbobio.com
www.dijibio.com
Order: order@dijibio.com
Tel: +86 519 8805 0026

EDG7 Antibody [#G239]

Catalog Number: G239

Concentration: 1mg/ml

Swiss-Prot No.: Q9UBY5

Other Names: Edg-7; endothelial differentiation, lysophosphatidic acid G-protein-coupled receptor, 7; GPCR; HOFNH30; LP-A3; LPA receptor 3; LPA-3; LPA3; LPAR3; lysophosphatidic acid receptor Edg-7; RP4-678I3

Storage/Stability: Store at -20°C/1 year

Form of Antibody: Rabbit IgG in phosphate buffered saline (without Mg²⁺ and Ca²⁺), pH 7.4, 150mM NaCl, 0.02% sodium azide and 50% glycerol.

Immunogen: The antiserum was produced against synthesized peptide derived from C-terminal of human

EDG7.

Purification: The antibody was affinity-purified from rabbit antiserum by affinity-chromatography using epitope-specific immunogen.

Specificity: EDG7 antibody detects endogenous levels of total EDG7 protein.

Reactivity: Human

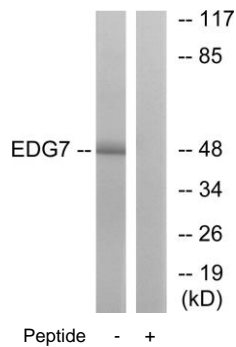
Applications: WB: 1:500~1:3000 IF: 1:100~1:500
ELISA: 1:40000

References:

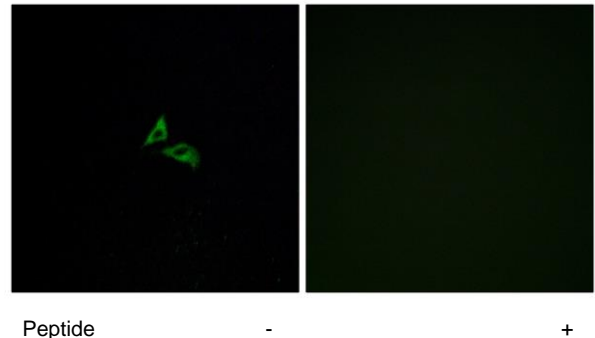
Bandoh K., J. Biol. Chem. 274:27776-27785(1999).

Im D.-S., Mol. Pharmacol. 57:753-759(2000).

Contos J.J.A., Mol. Pharmacol. 58:1188-1196(2000).



Western blot analysis of extracts from Jurkat cells, using EDG7 antibody.



Immunofluorescence analysis of A549 cells, using EDG7 antibody.