



**Web:** [www.anbobio.com](http://www.anbobio.com)  
[www.dijibio.com](http://www.dijibio.com)  
**Order:** [order@dijibio.com](mailto:order@dijibio.com)  
**Tel:** +86 519 8805 0026

## EDNRA Antibody [#G241]

**Catalog Number:** G241

**Concentration:** 1mg/ml

**Swiss-Prot No.:** P25101

**Other Names:** endothelin A receptor; endothelin receptor type A; endothelin-1 receptor; ET-A; ETA; ETA-R; ETRA; G protein-coupled receptor

**Storage/Stability:** Store at -20°C/1 year

**Form of Antibody:** Rabbit IgG in phosphate buffered saline (without Mg<sup>2+</sup> and Ca<sup>2+</sup>), pH 7.4, 150mM NaCl, 0.02% sodium azide and 50% glycerol.

**Immunogen:** The antiserum was produced against synthesized peptide derived from C-terminal of human EDNRA.

**Purification:** The antibody was affinity-purified from

rabbit antiserum by affinity-chromatography using epitope-specific immunogen.

**Specificity:** EDNRA antibody detects endogenous levels of total EDNRA protein.

**Reactivity:** Human, Mouse

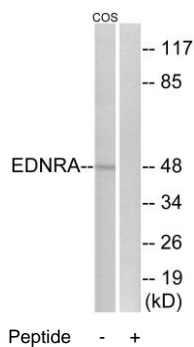
**Applications:** WB: 1:500~1:3000 IF: 1:100~1:500  
ELISA: 1:1000

**References:**

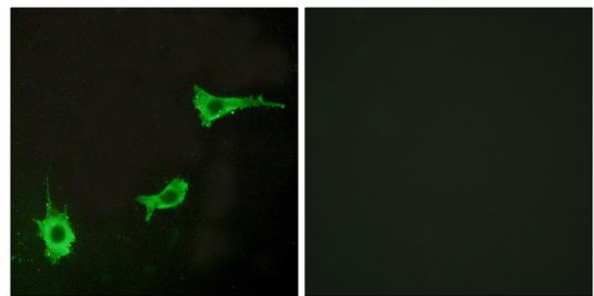
Adachi M., Biochem. Biophys. Res. Commun. 180:1265-1272(1991).

Cyr C., Biochem. Biophys. Res. Commun. 181:184-190(1991).

Hosoda K., FEBS Lett. 287:23-26(1991).



Western blot analysis of extracts from COS-7 cells, using EDNRA antibody.



Immunofluorescence analysis of LOVO cells, using EDNRA antibody.