



Web: [www.anbobio.com](http://www.anbobio.com)  
[www.dijibio.com](http://www.dijibio.com)  
Order: [order@dijibio.com](mailto:order@dijibio.com)  
Tel: (86) 519 8805 0026

## DNA Polymerase $\theta$ Antibody [#C10173]

**Catalog Number:** C10173

**Concentration:** 1mg/ml

**Swiss-Prot No.:** O75417

**Other Names:** DNA polymerase theta, EC 2.7.7.7, DNA polymerase eta, POLQ, POLH

**Storage/Stability:** Store at -20°C/1 year

**Form of Antibody:** Rabbit IgG in phosphate buffered saline (without Mg<sup>2+</sup> and Ca<sup>2+</sup>), pH 7.4, 150mM NaCl, 0.02% sodium azide and 50% glycerol.

**Immunogen:** The antiserum was produced against synthesized peptide derived from internal of human DNA Polymerase  $\theta$ .

**Purification:** The antibody was affinity-purified from rabbit antiserum by affinity-chromatography using epitope-specific immunogen.

**Specificity:** DNA Polymerase  $\theta$  antibody detects endogenous levels of total DNA Polymerase  $\theta$  protein.

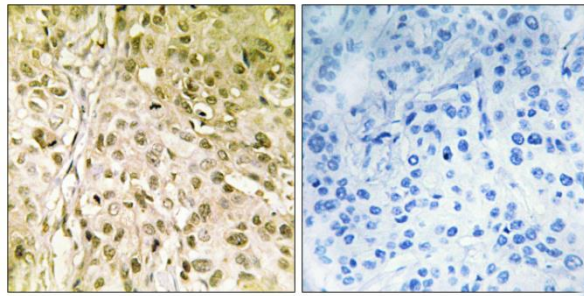
**Reactivity:** Human (Identities = 100%, Positives = 100%)

**Applications:** IHC: 1:50~1:100 ELISA: 1:20000

**References:**

Sharief F.S., Genomics 59:90-96(1999).

Harris P.V., Submitted (JAN-1998) to the EMBL/GenBank/DDBJ databases.



Peptide

-

+

Immunohistochemistry analysis of paraffin-embedded human breast carcinoma tissue, using DNA Polymerase  $\theta$  antibody.