



Web: www.anbobio.com
www.dijibio.com
Order: order@dijibio.com
Tel: (86) 519 8805 0026

Caper Antibody [#C10192]

Catalog Number: C10192

Concentration: 1mg/ml

Swiss-Prot No.: O75787

Other Names: Renin receptor [Precursor], Renin/prorenin receptor, ATPase H(+)-transporting lysosomal accessory protein 2, ATPase H(+)-transporting lysosomal-interacting protein 2, Vacuolar ATP synthase membrane sector-associated protein M8-9, V-ATPase M8.9 subunit, N14F, ER-localized type I transmembrane adaptor, Embryonic liver differentiation factor 10, ATP6AP2, ATP6IP2, CAPER, ELDF10, HT028, MSTP009, PSEC0072

Storage/Stability: Store at -20°C/1 year

Form of Antibody: Rabbit IgG in phosphate buffered saline (without Mg²⁺ and Ca²⁺), pH 7.4, 150mM NaCl, 0.02% sodium azide and 50% glycerol.

Immunogen: The antiserum was produced against synthesized peptide derived from Internal of human Caper.

Purification: The antibody was affinity-purified from rabbit antiserum by affinity-chromatography using epitope-specific immunogen.

Specificity: Caper antibody detects endogenous levels of total Caper protein.

Reactivity: Human, Mouse, Rat

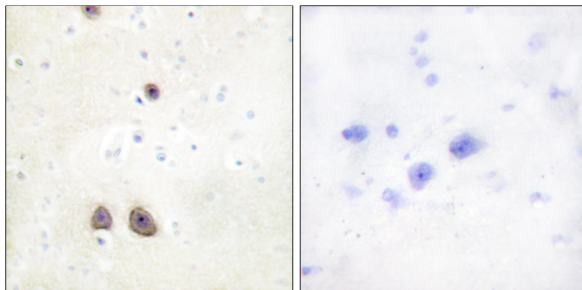
Applications: WB: 1:500~1:3000 IHC: 1:50~1:100
IF: 1:100~1:500 ELISA: 1:20000

References:

Nguyen G., J. Clin. Invest. 109:1417-1427(2002).

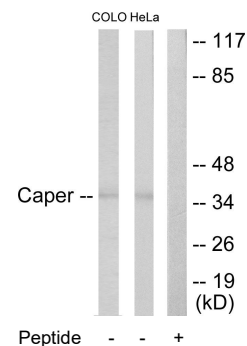
Hu R.-M., Proc. Natl. Acad. Sci. U.S.A. 97:9543-9548(2000).

Ramser J., Hum. Mol. Genet. 14:1019-1027(2005).

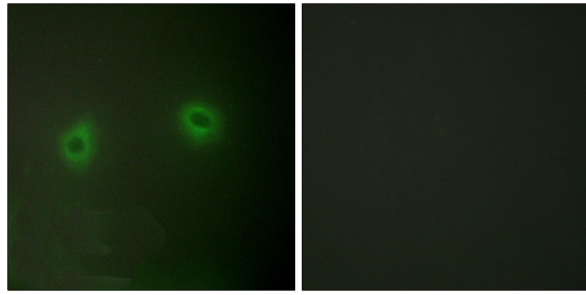


Peptide - +

Immunohistochemistry analysis of paraffin-embedded human brain tissue using Caper antibody.



Western blot analysis of extracts from COLO205 cells and HeLa cells, using Caper antibody.



Peptide

-

+

Immunofluorescence analysis of HeLa cells, using Caper antibody.