



Web: [www.anbobio.com](http://www.anbobio.com)  
[www.dijibio.com](http://www.dijibio.com)  
Order: [order@dijibio.com](mailto:order@dijibio.com)  
Tel: (86) 519 8805 0026

## CIB2 Antibody [#C10194]

**Catalog Number:** C10194

**Concentration:** 1mg/ml

**Swiss-Prot No.:** O75838

**Other Names:** Calcium and integrin-binding family member 2, Kinase-interacting protein 2, KIP 2, CIB2, KIP2

**Storage/Stability:** Store at -20°C/1 year

**Form of Antibody:** Rabbit IgG in phosphate buffered saline (without Mg<sup>2+</sup> and Ca<sup>2+</sup>), pH 7.4, 150mM NaCl, 0.02% sodium azide and 50% glycerol.

**Immunogen:** The antiserum was produced against synthesized peptide derived from internal of human CIB2.

**Purification:** The antibody was affinity-purified from

rabbit antiserum by affinity-chromatography using epitope-specific immunogen.

**Specificity:** CIB2 antibody detects endogenous levels of total CIB2 protein.

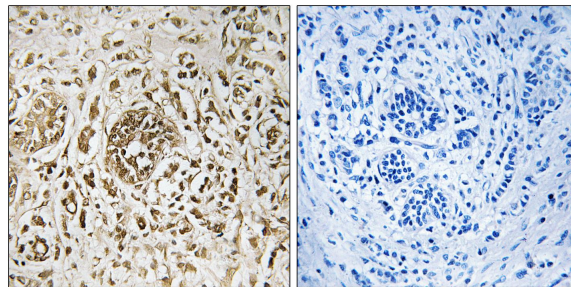
**Reactivity:** Human (Identities = 100%, Positives = 100%);  
Mouse (Identities = 100%, Positives = 100%);  
Rat (Identities = 100%, Positives = 100%)

**Applications:** IHC: 1:50~1:100 ELISA: 1:5000

**References:**

Seki N., Biochim. Biophys. Acta 1444:143-147(1999).

The MGC Project Team, Genome Res. 14:2121-2127(2004).



Peptide - +

Immunohistochemistry analysis of paraffin-embedded human breast carcinoma tissue, using CIB2 antibody.