



Web: www.anbobio.com
www.dijibio.com
Order: order@dijibio.com
Tel: (86) 519 8805 0026

TALL-2 Antibody [#C10195]

Catalog Number: C10195

Concentration: 1mg/ml

Swiss-Prot No.: O75888

Other Names: Tumor necrosis factor ligand superfamily member 13 [Precursor], A proliferation-inducing ligand, APRIL, TNF- and APOL-related leukocyte expressed ligand 2, TALL-2, TNF-related death ligand 1, TRDL-1, CD256 antigen, TNFSF13, APRIL, TALL2, ZTNF2, UNQ383/PRO715

Storage/Stability: Store at -20°C/1 year

Form of Antibody: Rabbit IgG in phosphate buffered saline (without Mg²⁺ and Ca²⁺), pH 7.4, 150mM NaCl, 0.02% sodium azide and 50% glycerol.

Immunogen: The antiserum was produced against

synthesized peptide derived from internal of human TALL-2.

Purification: The antibody was affinity-purified from rabbit antiserum by affinity-chromatography using epitope-specific immunogen.

Specificity: TALL-2 antibody detects endogenous levels of total TALL-2 protein.

Reactivity: Human, Mouse, Rat

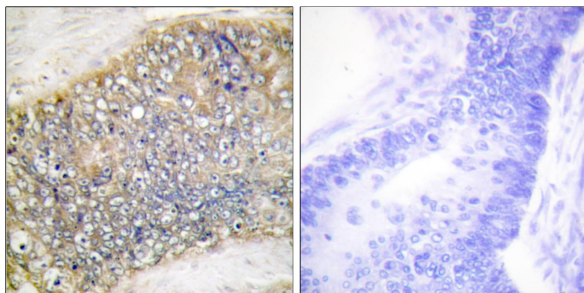
Applications: WB: 1:500~1:3000 IHC: 1:50~1:100
IF: 1:100~1:500 ELISA: 1:10000

References:

Hahne M., J. Exp. Med. 188:1185-1190(1998).

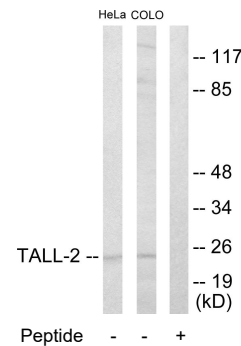
Shu H.-B., J. Leukoc. Biol. 65:680-683(1999).

Kelly K.A., Cancer Res. 60:1021-1027(2000).



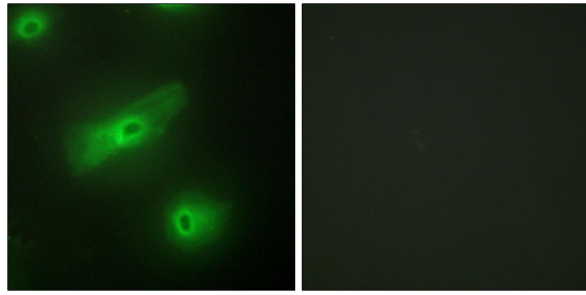
Peptide - +

Immunohistochemistry analysis of paraffin-embedded human colon carcinoma tissue using TALL-2 antibody.



Peptide - - +

Western blot analysis of extracts from HeLa cells and COLO205 cells, using TALL-2 antibody.



Peptide

-

+

Immunofluorescence analysis of HeLa cells, using TALL-2 antibody.