



Web: www.anbobio.com
www.dijibio.com
Order: order@dijibio.com
Tel: (86) 519 8805 0026

HES7 Antibody [#C10210]

Catalog Number: C10210

Concentration: 1mg/ml

Swiss-Prot No.: O94992

Other Names: Protein HEXIM1, Hexamethylene bis-acetamide-inducible protein 1, Cardiac lineage protein 1, Estrogen down-regulated gene 1 protein, Menage a quatre protein 1, HEXIM1, CLP1, EDG1, HIS1, MAQ1

Storage/Stability: Store at -20°C/1 year

Form of Antibody: Rabbit IgG in phosphate buffered saline (without Mg²⁺ and Ca²⁺), pH 7.4, 150mM NaCl, 0.02% sodium azide and 50% glycerol.

Immunogen: The antiserum was produced against synthesized peptide derived from Internal of human

HES7.

Purification: The antibody was affinity-purified from rabbit antiserum by affinity-chromatography using epitope-specific immunogen.

Specificity: HES7 antibody detects endogenous levels of total HES7 protein.

Reactivity: Human, Mouse, Rat

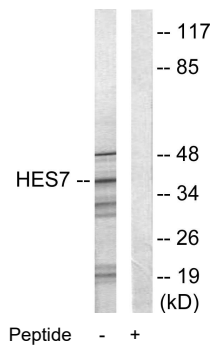
Applications: WB: 1:500~1:3000 IF: 1:100~1:500
ELISA: 1:10000

References:

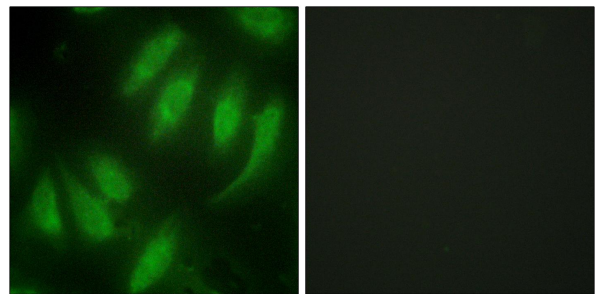
Kusuhara M., Biomed. Res. 20:273-279(1999).

Wittmann B.M., Cancer Res. 63:5151-5158(2003).

Ouchida R., Genes Cells 8:95-107(2003).



Western blot analysis of extracts from NIH-3T3 cells, using HES7 antibody.



Immunofluorescence analysis of HeLa cells, using HES7 antibody.