



Web: www.anbio.com
www.dijibio.com
Order: order@dijibio.com
Tel: (86) 519 8805 0026

LRAT Antibody [#C10219]

Catalog Number: C10219

Concentration: 1mg/ml

Swiss-Prot No.: O95237

Other Names: Lecithin retinol acyltransferase, EC 2.3.1.135, Phosphatidylcholine--retinol O-acyltransferase, LRAT

Storage/Stability: Store at -20°C/1 year

Form of Antibody: Rabbit IgG in phosphate buffered saline (without Mg²⁺ and Ca²⁺), pH 7.4, 150mM NaCl, 0.02% sodium azide and 50% glycerol.

Immunogen: The antiserum was produced against synthesized peptide derived from internal of human LRAT.

Purification: The antibody was affinity-purified from rabbit antiserum by affinity-chromatography using epitope-specific immunogen.

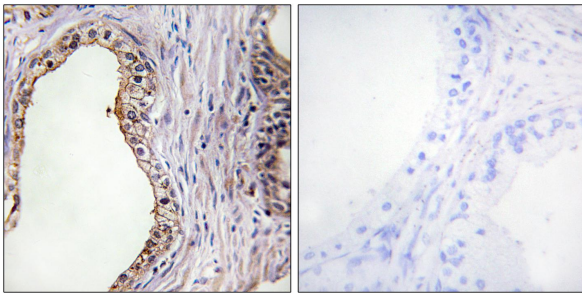
Specificity: LRAT antibody detects endogenous levels of total LRAT protein.

Reactivity: Human, Mouse, Rat

Applications: WB: 1:500~1:3000 IHC: 1:50~1:100
IF: 1:100~1:500 ELISA: 1:10000

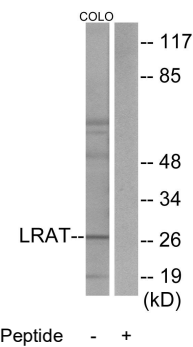
References:

Ruiz A., J. Biol. Chem. 274:3834-3841(1999).
Mondal M.S., Biochemistry 39:5215-5220(2000).
Thompson D.A., Nat. Genet. 28:123-124(2001).



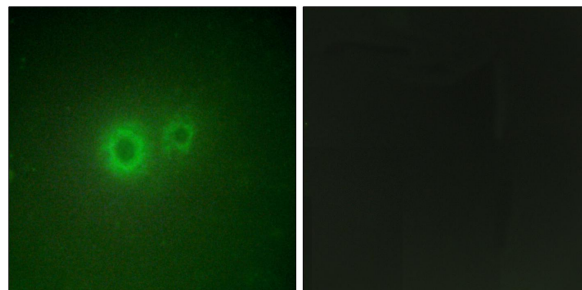
Peptide - +

Immunohistochemistry analysis of paraffin-embedded human prostate carcinoma tissue using LRAT antibody.



Peptide - +

Western blot analysis of extracts from COLO205 cells, using LRAT antibody.



Peptide - +

Immunofluorescence analysis of HUVEC cells, using LRAT antibody.