



Web: www.anbobio.com
www.dijibio.com
Order: order@dijibio.com
Tel: (86) 519 8805 0026

NDUC2 Antibody [#C10222]

Catalog Number: C10222

Concentration: 1mg/ml

Swiss-Prot No.: O95298

Other Names: NADH dehydrogenase [ubiquinone] 1 subunit C2, EC 1.6.5.3, EC 1.6.99.3, NADH-ubiquinone oxidoreductase subunit B14.5b, Complex I-B14.5b, CI-B14.5b, Lung cancer oncogene 1 protein, HLC-1, NDUF2, HLC1

Storage/Stability: Store at -20°C/1 year

Form of Antibody: Rabbit IgG in phosphate buffered saline (without Mg²⁺ and Ca²⁺), pH 7.4, 150mM NaCl, 0.02% sodium azide and 50% glycerol.

Immunogen: The antiserum was produced against synthesized peptide derived from internal of human

NDUC2.

Purification: The antibody was affinity-purified from rabbit antiserum by affinity-chromatography using epitope-specific immunogen.

Specificity: NDUC2 antibody detects endogenous levels of total NDUC2 protein.

Reactivity: Human (Identities = 100%, Positives = 100%);
Rat (Identities = 100%, Positives = 100%)

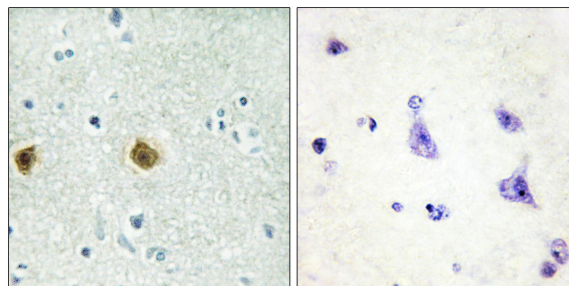
Applications: IHC: 1:50~1:100 ELISA: 1:10000

References:

Loeffen J.L.C.M., Biochem. Biophys. Res. Commun. 253:415-422(1998).

Zhang Q.-H., Genome Res. 10:1546-1560(2000).

Wiemann S., Genome Res. 11:422-435(2001).



Peptide

-

+

Immunohistochemistry analysis of paraffin-embedded human brain tissue, using NDUC2 antibody.