



Web: www.anbobio.com
www.dijibio.com
Order: order@dijibio.com
Tel: +86 519 8805 0026

GPR137C Antibody [#G264]

Catalog Number: G264

Concentration: 1mg/ml

Swiss-Prot No.: Q8N3F9

Other Names: Integral membrane protein GPR137C;
Transmembrane 7 superfamily member 1-like 2 protein;
GPR137C; TM7SF1L2

Storage/Stability: Store at -20°C/1 year

Form of Antibody: Rabbit IgG in phosphate buffered saline (without Mg²⁺ and Ca²⁺), pH 7.4, 150mM NaCl, 0.02% sodium azide and 50% glycerol.

Immunogen: The antiserum was produced against synthesized peptide derived from internal of human GPR137C.

Purification: The antibody was affinity-purified from

rabbit antiserum by affinity-chromatography using epitope-specific immunogen.

Specificity: GPR137C antibody detects endogenous levels of total GPR137C protein.

Reactivity: Human

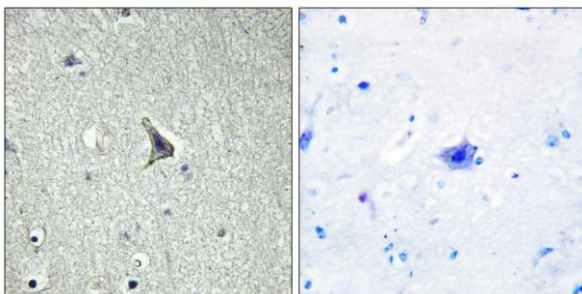
Applications: WB: 1:500~1:3000 IHC: 1:50~1:100
IF: 1:100~1:500 ELISA: 1:1000

References:

Heilig R., Nature 421:601-607(2003).

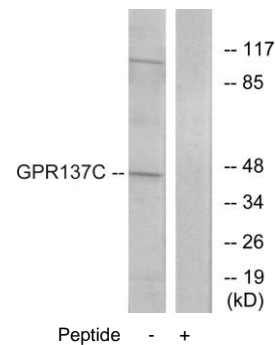
Vassilatis D.K., Proc. Natl. Acad. Sci. U.S.A. 100:4903-4908(2003).

The German cDNA consortium; Submitted (SEP-2004) to the EMBL/GenBank/DDBJ databases.



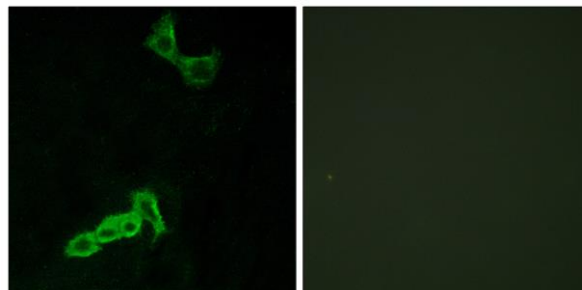
Peptide - +

Immunohistochemistry analysis of paraffin-embedded human brain tissue using GPR137C antibody.



Peptide - +

Western blot analysis of extracts from HepG2 cells, using GPR137C antibody.



Peptide - +

Immunofluorescence analysis of MCF-7 cells, using GPR137C antibody.

