



Web: www.anbobio.com

www.dijibio.com

Order: order@dijibio.com

Tel: +86 519 8805 0026

GHRHR Antibody [#G271]

Catalog Number: G271

Concentration: 1mg/ml

Swiss-Prot No.: Q02643

Other Names: GHRFR; GHRH receptor; GHRHRpsv; GRF receptor; GRFR; growth hormone-releasing hormone receptor

Storage/Stability: Store at -20°C/1 year

Form of Antibody: Rabbit IgG in phosphate buffered saline (without Mg²⁺ and Ca²⁺), pH 7.4, 150mM NaCl, 0.02% sodium azide and 50% glycerol.

Immunogen: The antiserum was produced against synthesized peptide derived from internal of human GHRHR.

Purification: The antibody was affinity-purified from rabbit antiserum by affinity-chromatography using epitope-specific immunogen.

Specificity: GHRHR antibody detects endogenous levels of total GHRHR protein.

Reactivity: Human, Mouse, Rat

Applications: WB: 1:500~1:3000 IF: 1:100~1:500

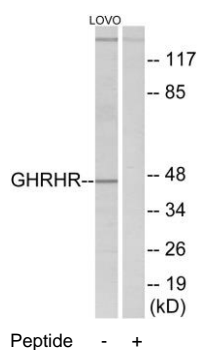
ELISA: 1:1000

References:

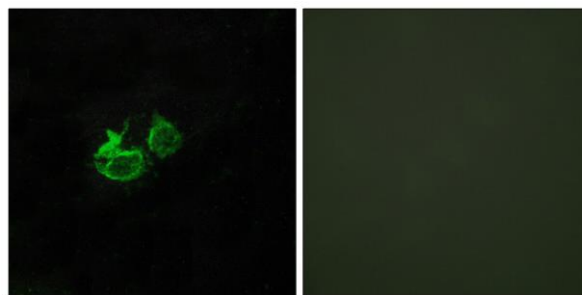
Mayo K.E.; Mol. Endocrinol. 6:1734-1744(1992).

Gaylinn B.D., Mol. Endocrinol. 7:77-84(1993).

Hillier L.W., Nature 424:157-164(2003).



Western blot analysis of extracts from LOVO cells, using GHRHR antibody.



Immunofluorescence analysis of HUVEC cells, using GHRHR antibody.