



**Web:** [www.anbobio.com](http://www.anbobio.com)  
[www.dijibio.com](http://www.dijibio.com)  
**Order:** [order@dijibio.com](mailto:order@dijibio.com)  
**Tel:** +86 519 8805 0026

## GLR Antibody [#G275]

**Catalog Number:** G275

**Concentration:** 1mg/ml

**Swiss-Prot No.:** P47871

**Other Names:** Glucagon receptor [Precursor]; GL-R;  
GCGR

**Storage/Stability:** Store at -20°C/1 year

**Form of Antibody:** Rabbit IgG in phosphate buffered saline (without Mg<sup>2+</sup> and Ca<sup>2+</sup>), pH 7.4, 150mM NaCl, 0.02% sodium azide and 50% glycerol.

**Immunogen:** The antiserum was produced against synthesized peptide derived from internal of human GLR.

**Purification:** The antibody was affinity-purified from

rabbit antiserum by affinity-chromatography using epitope-specific immunogen.

**Specificity:** GLR antibody detects endogenous levels of total GLR protein.

**Reactivity:** Human, Mouse, Rat

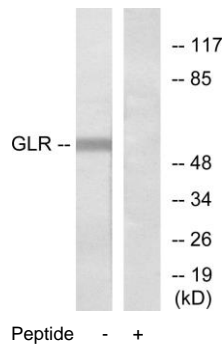
**Applications:** WB: 1:500~1:3000 IF: 1:100~1:500  
ELISA: 1:1000

**References:**

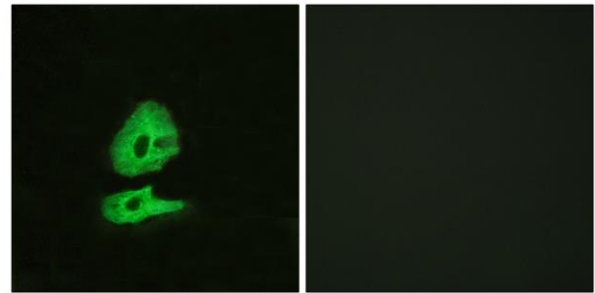
Macneil D.J., Biochem. Biophys. Res. Commun. 198:328-334(1994).

Lok S., Gene 140:203-209(1994).

Menzel S., Genomics 20:327-328(1994).



Western blot analysis of extracts from COLO205 cells, using GLR antibody.



Immunofluorescence analysis of HeLa cells, using GLR antibody.