



Web: [www.anbobio.com](http://www.anbobio.com)  
[www.dijibio.com](http://www.dijibio.com)  
Order: [order@dijibio.com](mailto:order@dijibio.com)  
Tel: (86) 519 8805 0026

## TRIM16 Antibody [#C10224]

**Catalog Number:** C10224

**Concentration:** 1mg/ml

**Swiss-Prot No.:** O95361

**Other Names:** EBBP, Estrogen-responsive B box protein, TM16, TRI16, Tripartite motif protein 16

**Storage/Stability:** Store at -20°C/1 year

**Form of Antibody:** Rabbit IgG in phosphate buffered saline (without Mg<sup>2+</sup> and Ca<sup>2+</sup>), pH 7.4, 150mM NaCl, 0.02% sodium azide and 50% glycerol.

**Immunogen:** The antiserum was produced against synthesized peptide derived from N-terminal of human TRIM16.

**Purification:** The antibody was affinity-purified from rabbit antiserum by affinity-chromatography using epitope-specific immunogen.

**Specificity:** TRIM16 antibody detects endogenous levels of total TRIM16 protein.

**Reactivity:** Human (Identities = 100%, Positives = 100%)

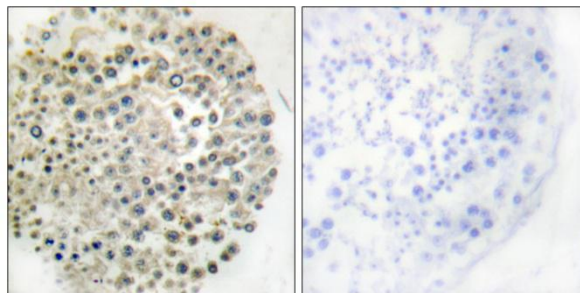
**Applications:** IHC: 1:50~1:100 ELISA: 1:1000

**References:**

Liu H.-L.C., Mol. Endocrinol. 12:1733-1748(1998).

Beer H.-D., J. Biol. Chem. 277:20740-20749(2002).

Beausoleil S.A., Proc. Natl. Acad. Sci. U.S.A. 101:12130-12135(2004).



Peptide

-

+

Immunohistochemistry analysis of paraffin-embedded human testis tissue, using TRIM16 antibody.