



Web: [www.anbobio.com](http://www.anbobio.com)  
[www.dijibio.com](http://www.dijibio.com)  
Order: [order@dijibio.com](mailto:order@dijibio.com)  
Tel: (86) 519 8805 0026

## TFIP8 Antibody [#C10226]

**Catalog Number:** C10226

**Concentration:** 1mg/ml

**Swiss-Prot No.:** O95379

**Other Names:** Tumor necrosis factor, alpha-induced protein 8, Head and neck tumor and metastasis-related protein, TNF-induced protein GG2-1, SCC-S2, NF-kappa-B-inducible DED-containing protein, NDED, MDC-3.13, TNFAIP8

**Storage/Stability:** Store at -20°C/1 year

**Form of Antibody:** Rabbit IgG in phosphate buffered saline (without Mg<sup>2+</sup> and Ca<sup>2+</sup>), pH 7.4, 150mM NaCl, 0.02% sodium azide and 50% glycerol.

**Immunogen:** The antiserum was produced against synthesized peptide derived from internal of human

TFIP8.

**Purification:** The antibody was affinity-purified from rabbit antiserum by affinity-chromatography using epitope-specific immunogen.

**Specificity:** TFIP8 antibody detects endogenous levels of total TFIP8 protein.

**Reactivity:** Human, Mouse

**Applications:** WB: 1:500~1:3000 IHC: 1:50~1:100

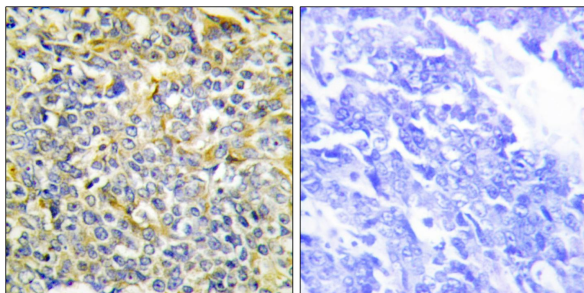
IF: 1:100~1:500 ELISA: 1:10000

**References:**

Horrevoets A.J.G., Blood 93:3418-3431(1999).

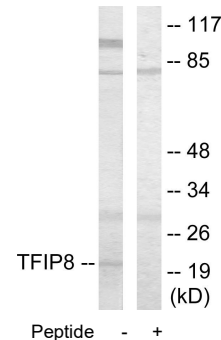
Kumar D., J. Biol. Chem. 275:2973-2978(2000).

You Z., J. Biol. Chem. 276:26398-26404(2001).



Peptide - +

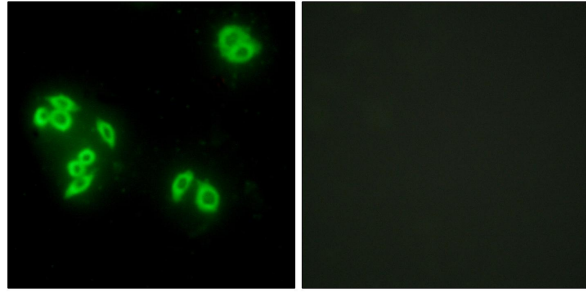
Immunohistochemistry analysis of paraffin-embedded human lung carcinoma tissue, using TFIP8 antibody.



Peptide - +

Western blot analysis of extracts from HUVEC cells, using TFIP8 antibody.

**For Research Use Only**



Peptide                      -                      +

Immunofluorescence analysis of A549 cells, using TFIP8 antibody.