



Web: www.anbobio.com
www.dijibio.com
Order: order@dijibio.com
Tel: (86) 519 8805 0026

MAP3K6 Antibody [#C10227]

Catalog Number: C10227

Concentration: 1mg/ml

Swiss-Prot No.: O95382

Other Names: EC 2.7.11.25, M3K6, MAPKKK6,
Mitogen-activated protein kinase kinase kinase 6, kinase
MAP3K6

Storage/Stability: Store at -20°C/1 year

Form of Antibody: Rabbit IgG in phosphate buffered
saline (without Mg²⁺ and Ca²⁺), pH 7.4, 150mM NaCl,
0.02% sodium azide and 50% glycerol.

Immunogen: The antiserum was produced against
synthesized peptide derived from internal of human
MAP3K6.

Purification: The antibody was affinity-purified from
rabbit antiserum by affinity-chromatography using
epitope-specific immunogen.

Specificity: MAP3K6 antibody detects endogenous
levels of total MAP3K6 protein.

Reactivity: Human (Identities = 100%, Positives = 100%);
Mouse (Identities = 85%, Positives = 85%)

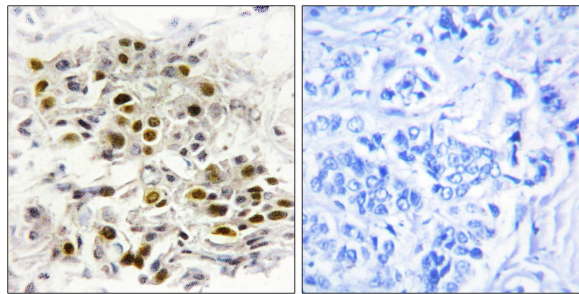
Applications: IHC: 1:50~1:100 ELISA: 1:1000

References:

Takeda K., J. Biol. Chem. 282:7522-7531(2007).

Gregory S.G., Nature 441:315-321(2006).

Wang X.S., Biochem. Biophys. Res. Commun.
253:33-37(1998).



Peptide -

+

Immunohistochemistry analysis of paraffin-embedded
human breast carcinoma tissue, using MAP3K6 antibody.