



Web: [www.anbobio.com](http://www.anbobio.com)

[www.dijibio.com](http://www.dijibio.com)

Order: [order@dijibio.com](mailto:order@dijibio.com)

Tel: (86) 519 8805 0026

## TBX15/18 Antibody [#C10245]

**Catalog Number:** C10245

**Concentration:** 1mg/ml

**Swiss-Prot No.:** Q96SF7/O95935

**Other Names:** T-box transcription factor TBX15, T-box protein 15, TBX15, TBX14, T-box transcription factor TBX18, T-box protein 18, TBX18

**Storage/Stability:** Store at -20°C/1 year

**Form of Antibody:** Rabbit IgG in phosphate buffered saline (without Mg<sup>2+</sup> and Ca<sup>2+</sup>), pH 7.4, 150mM NaCl, 0.02% sodium azide and 50% glycerol.

**Immunogen:** The antiserum was produced against synthesized peptide derived from internal of human TBX15/18.

**Purification:** The antibody was affinity-purified from rabbit antiserum by affinity-chromatography using epitope-specific immunogen.

**Specificity:** TBX15/18 antibody detects endogenous levels of total TBX15/18 protein.

**Reactivity:** Human, Mouse

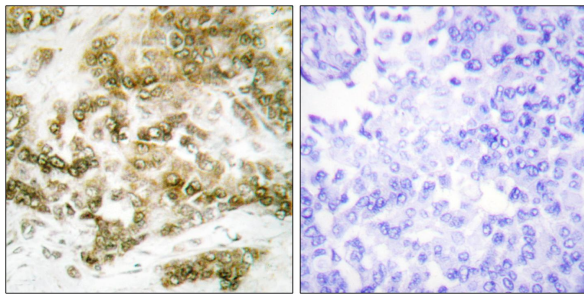
**Applications:** WB: 1:500~1:3000 IHC: 1:50~1:100  
IF: 1:100~1:500 ELISA: 1:5000

**References:**

Tao W., Nat. Genet. 21:177-181(1999).

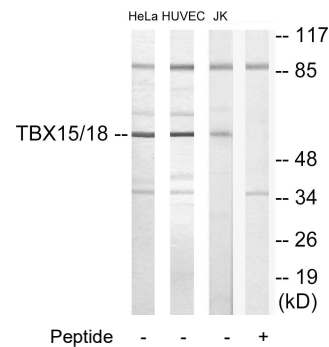
Nishiyama Y., FEBS Lett. 459:159-165(1999).

Hirota T., J. Cell Biol. 149:1073-1086(2000).

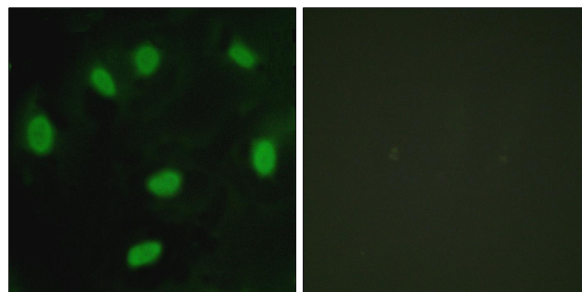


Peptide - +

Immunohistochemistry analysis of paraffin-embedded human breast carcinoma tissue using TBX15/18 antibody.



Western blot analysis of extracts from HeLa cells, HUVEC cells and Jurkat cells, using TBX15/18 antibody.



Peptide - +

Immunofluorescence analysis of HeLa cells, using TBX15/18 antibody.