



Web: [www.anbobio.com](http://www.anbobio.com)  
[www.dijibio.com](http://www.dijibio.com)  
Order: [order@dijibio.com](mailto:order@dijibio.com)  
Tel: (86) 519 8805 0026

## PTTG1 Antibody [#C10252]

**Catalog Number:** C10252

**Concentration:** 1mg/ml

**Swiss-Prot No.:** O95997

**Other Names:** EAP1, PTTG, PTTG1, TUTR1

**Storage/Stability:** Store at -20°C/1 year

**Form of Antibody:** Rabbit IgG in phosphate buffered saline (without Mg<sup>2+</sup> and Ca<sup>2+</sup>), pH 7.4, 150mM NaCl, 0.02% sodium azide and 50% glycerol.

**Immunogen:** The antiserum was produced against synthesized peptide derived from internal of human PTTG1.

**Purification:** The antibody was affinity-purified from

rabbit antiserum by affinity-chromatography using epitope-specific immunogen.

**Specificity:** PTTG1 antibody detects endogenous levels of total PTTG1 protein.

**Reactivity:** Human

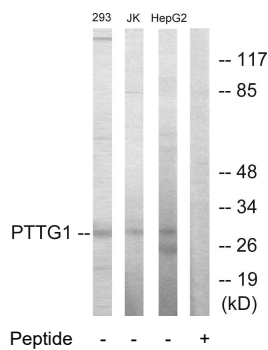
**Applications:** WB: 1:500~1:3000 IF: 1:100~1:500  
ELISA: 1:20000

**References:**

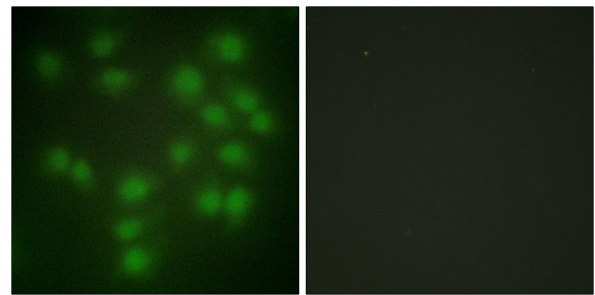
Dominguez A., *Oncogene* 17:2187-2193(1998).

Kakar S.S., *Cytogenet. Cell Genet.* 84:211-216(1999).

Zhang X., *Mol. Endocrinol.* 13:156-166(1999).



Western blot analysis of extracts from 293 cells, Jurkat cells and HepG2 cells, using PTTG1 antibody.



Immunofluorescence analysis of HUVEC cells, using PTTG1 antibody.

**For Research Use Only**