



Web: [www.anbobio.com](http://www.anbobio.com)  
[www.dijibio.com](http://www.dijibio.com)  
Order: [order@dijibio.com](mailto:order@dijibio.com)  
Tel: (86) 519 8805 0026

## ABL1 Antibody [#C10256]

**Catalog Number:** C10256

**Concentration:** 1mg/ml

**Swiss-Prot No.:** P00519

**Other Names:** ABL1, EC 2.7.1.112, JTK7,  
Proto-oncogene tyrosine-protein kinase ABL1, c-ABL,  
p150

**Storage/Stability:** Store at -20°C/1 year

**Form of Antibody:** Rabbit IgG in phosphate buffered  
saline (without Mg<sup>2+</sup> and Ca<sup>2+</sup>), pH 7.4, 150mM NaCl,  
0.02% sodium azide and 50% glycerol.

**Immunogen:** The antiserum was produced against  
synthesized peptide derived from internal of human ABL1.

**Purification:** The antibody was affinity-purified from  
rabbit antiserum by affinity-chromatography using  
epitope-specific immunogen.

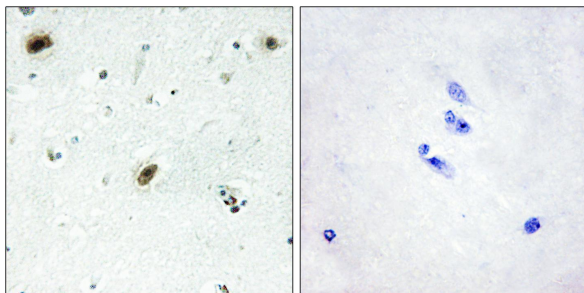
**Specificity:** ABL1 antibody detects endogenous levels of  
total ABL1 protein.

**Reactivity:** Human, Mouse, Rat

**Applications:** WB: 1:500~1:3000 IHC: 1:50~1:100  
ELISA: 1:20000

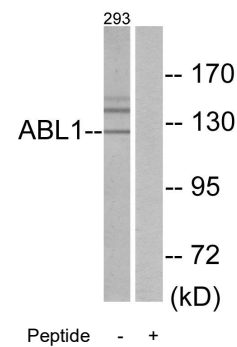
**References:**

Chissoe S.L., Genomics 27:67-82(1995).  
Wisniewski D., Blood 93:2707-2720(1999).  
Lin W.-H., Genomics 74:12-20(2001).



Peptide - +

Immunohistochemistry analysis of paraffin-embedded  
human brain tissue using ABL1 antibody.



Peptide - +

Western blot analysis of extracts from 293 cells, using  
ABL1 antibody.