



Web: www.anbobio.com
www.dijibio.com
Order: order@dijibio.com
Tel: (86) 519 8805 0026

KAD1 Antibody [#C10259]

Catalog Number: C10259

Concentration: 1mg/ml

Swiss-Prot No.: P00568

Other Names: Adenylate kinase isoenzyme 1, EC 2.7.4.3, ATP-AMP transphosphorylase, AK1, Myokinase, KAD1

Storage/Stability: Store at -20°C/1 year

Form of Antibody: Rabbit IgG in phosphate buffered saline (without Mg²⁺ and Ca²⁺), pH 7.4, 150mM NaCl, 0.02% sodium azide and 50% glycerol.

Immunogen: The antiserum was produced against synthesized peptide derived from internal of human KAD1.

Purification: The antibody was affinity-purified from rabbit antiserum by affinity-chromatography using

epitope-specific immunogen.

Specificity: KAD1 antibody detects endogenous levels of total KAD1 protein.

Reactivity: Human (Identities = 100%, Positives = 100%);
Mouse (Identities = 100%, Positives = 100%);
Rat (Identities = 100%, Positives = 100%)

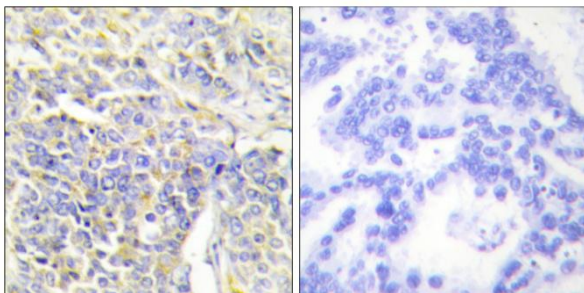
Applications: IHC: 1:50~1:100 IF: 1:100~1:500
ELISA: 1:5000

References:

von Zabern I., Eur. J. Biochem. 68:281-290(1976).

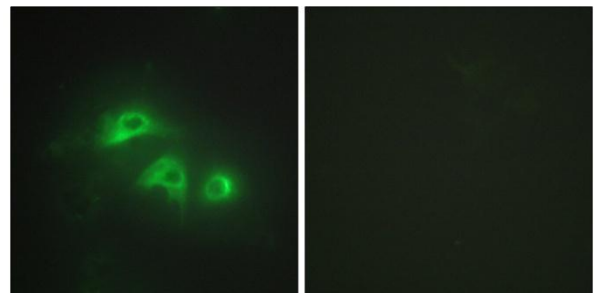
Matsuura S., J. Biol. Chem. 264:10148-10155(1989).

The MGC Project Team, Genome Res. 14:2121-2127(2004).



Peptide - +

Immunohistochemistry analysis of paraffin-embedded human lung carcinoma tissue, using KAD1 antibody.



Peptide - +

Immunofluorescence analysis of HepG2 cells, using KAD1 antibody.