



Web: www.anbobio.com
www.dijibio.com
Order: order@dijibio.com
Tel: (86) 519 8805 0026

Myc Antibody [#C10262]

Catalog Number: C10262

Concentration: 1mg/ml

Swiss-Prot No.: P01106

Other Names: Myc proto-oncogene protein, c-myc

Storage/Stability: Store at -20°C/1 year

Form of Antibody: Rabbit IgG in phosphate buffered saline (without Mg²⁺ and Ca²⁺), pH 7.4, 150mM NaCl, 0.02% sodium azide and 50% glycerol.

Immunogen: The antiserum was produced against synthesized peptide derived from C-terminal of human Myc.

Purification: The antibody was affinity-purified from

rabbit antiserum by affinity-chromatography using epitope-specific immunogen.

Specificity: Myc antibody detects endogenous levels of total Myc protein.

Reactivity: Human, Mouse, Rat

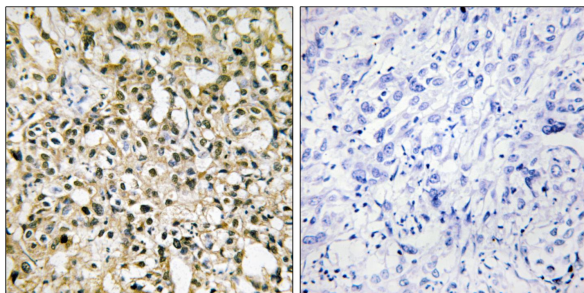
Applications: WB: 1:500~1:3000 IHC: 1:50~1:100
ELISA: 1:40000

References:

Batley J., Cell 34:779-787(1983).

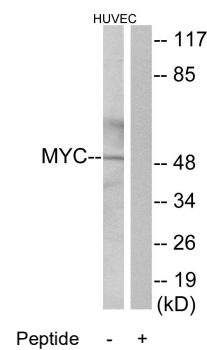
Bernard O., EMBO J. 2:2375-2383(1983).

Colby W.W., Nature 301:722-725(1983).



Peptide - +

Immunohistochemistry analysis of paraffin-embedded human liver carcinoma tissue, using Myc antibody.



Western blot analysis of extracts from HUVEC cells, using Myc antibody.

For Research Use Only