



Web: www.anbobio.com
www.dijibio.com
Order: order@dijibio.com
Tel: (86) 519 8805 0026

Heparin Cofactor II Antibody [#C10281]

Catalog Number: C10281

Concentration: 1mg/ml

Swiss-Prot No.: P05546

Other Names: Heparin cofactor 2 [Precursor], Heparin cofactor II, HC-II, Protease inhibitor leuserpin 2, HLS2, SERPIND1, HCF2

Storage/Stability: Store at -20°C/1 year

Form of Antibody: Rabbit IgG in phosphate buffered saline (without Mg²⁺ and Ca²⁺), pH 7.4, 150mM NaCl, 0.02% sodium azide and 50% glycerol.

Immunogen: The antiserum was produced against synthesized peptide derived from internal of human Heparin Cofactor II.

Purification: The antibody was affinity-purified from

rabbit antiserum by affinity-chromatography using epitope-specific immunogen.

Specificity: Heparin Cofactor II antibody detects endogenous levels of total Heparin Cofactor II protein.

Reactivity: Human (Identities = 100%, Positives = 100%);
Mouse (Identities = 100%, Positives = 100%);
Rat (Identities = 100%, Positives = 100%)

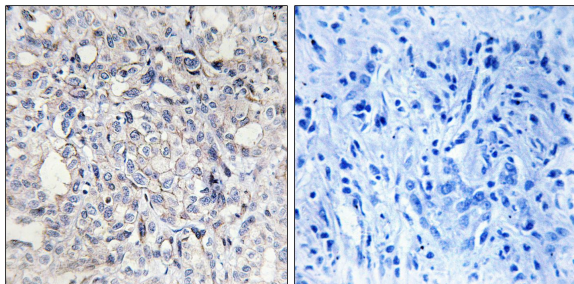
Applications: IHC: 1:50~1:100 IF: 1:100~1:500
ELISA: 1:5000

References:

Blinder M.A., Biochemistry 27:752-759(1988).

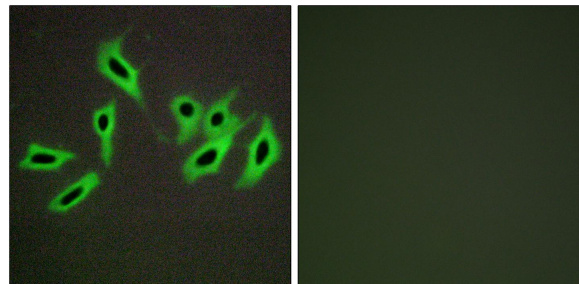
Herzog R., Biochemistry 30:1350-1357(1991).

Collins J.E., Genome Biol. 5:RESEARCH84.1-RESEARCH84.11(2004).



Peptide - +

Immunohistochemistry analysis of paraffin-embedded human liver carcinoma tissue, using Heparin Cofactor II antibody.



Peptide - +

Immunofluorescence analysis of HepG2 cells, using Heparin Cofactor II antibody.