



Web: [www.anbobio.com](http://www.anbobio.com)  
[www.dijibio.com](http://www.dijibio.com)  
Order: [order@dijibio.com](mailto:order@dijibio.com)  
Tel: (86) 519 8805 0026

## CDC2 Antibody [#C10288]

**Catalog Number:** C10288

**Concentration:** 1mg/ml

**Swiss-Prot No.:** P06493

**Other Names:** CDC28, CDC2A, CDK1, Cell division control protein 2 homolog, Cyclin-dependent kinase 1, EC 2.7.11.22, EC 2.7.11.23, MPF, kinase Cdc2, p34 protein kinase

**Storage/Stability:** Store at -20°C/1 year

**Form of Antibody:** Rabbit IgG in phosphate buffered saline (without Mg<sup>2+</sup> and Ca<sup>2+</sup>), pH 7.4, 150mM NaCl, 0.02% sodium azide and 50% glycerol.

**Immunogen:** The antiserum was produced against synthesized peptide derived from internal of human

CDC2.

**Purification:** The antibody was affinity-purified from rabbit antiserum by affinity-chromatography using epitope-specific immunogen.

**Specificity:** CDC2 antibody detects endogenous levels of total CDC2 protein.

**Reactivity:** Human, Mouse, Rat

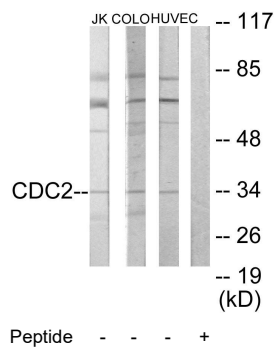
**Applications:** WB: 1:500~1:3000 IF: 1:100~1:500  
ELISA: 1:5000

**References:**

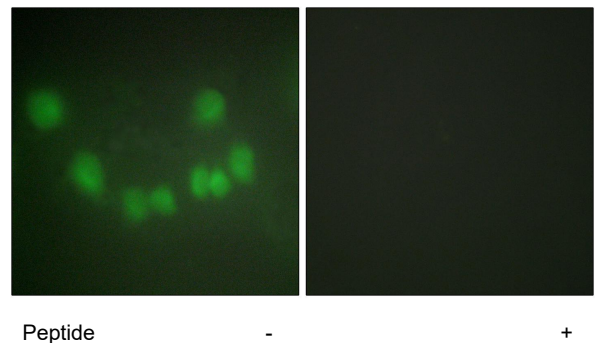
Lee M.G., Nature 327:31-35(1987).

Ohta T., Cancer Res. 58:1095-1098(1998).

Draetta G., Cell 54:17-26(1988).



Western blot analysis of extracts from Jurkat cells, COLO205 cells and HUVEC cells, using CDC2 antibody.



Immunofluorescence analysis of HUVEC cells, using CDC2 antibody.

**For Research Use Only**