



Web: www.anbobio.com
www.dijibio.com
Order: order@dijibio.com
Tel: (86) 519 8805 0026

M-CK Antibody [#C10289]

Catalog Number: C10289

Concentration: 1mg/ml

Swiss-Prot No.: P06732

Other Names: CKM, CKMM., EC 2.7.3.2, KCRM, creatine kinase, M chain, creatine kinase, muscle

Storage/Stability: Store at -20°C/1 year

Form of Antibody: Rabbit IgG in phosphate buffered saline (without Mg²⁺ and Ca²⁺), pH 7.4, 150mM NaCl, 0.02% sodium azide and 50% glycerol.

Immunogen: The antiserum was produced against synthesized peptide derived from N-terminal of human M-CK.

Purification: The antibody was affinity-purified from rabbit antiserum by affinity-chromatography using epitope-specific immunogen.

Specificity: M-CK antibody detects endogenous levels of total M-CK protein.

Reactivity: Human, Mouse, Rat

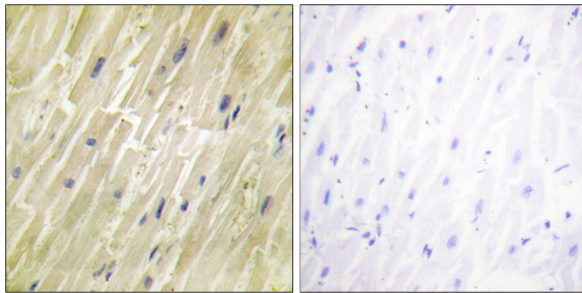
Applications: WB: 1:500~1:3000 IHC: 1:50~1:100
IF: 1:100~1:500 ELISA: 1:40000

References:

Grimwood J., Nature 428:529-535(2004).

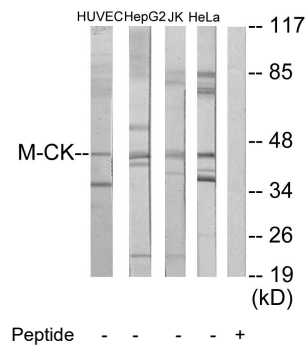
Hamburg R.J., J. Biol. Chem. 265:6403-6409(1990).

Tang L., Acta Crystallogr. D 55:669-670(1999).

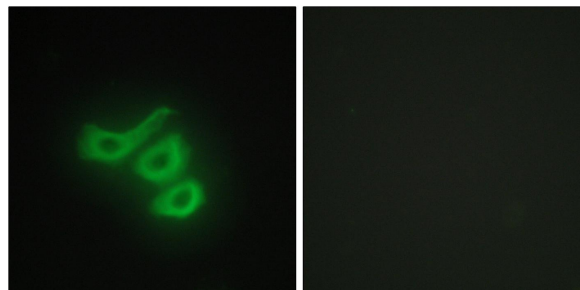


Peptide - +

Immunohistochemistry analysis of paraffin-embedded human heart tissue using M-CK antibody.



Western blot analysis of extracts from HUVEC cells, HepG2 cells, Jurkat cells and HeLa cells, using M-CK antibody.



Peptide - +

Immunofluorescence analysis of HepG2 cells, using M-CK antibody.

For Research Use Only