



Web: www.anbobio.com
www.dijibio.com
Order: order@dijibio.com
Tel: (86) 519 8805 0026

HKR1 Antibody [#C10329]

Catalog Number: C10329

Concentration: 1mg/ml

Swiss-Prot No.: P10072

Other Names: Krueppel-related zinc finger protein 1, Protein HKR1, HKR1

Storage/Stability: Store at -20°C/1 year

Form of Antibody: Rabbit IgG in phosphate buffered saline (without Mg²⁺ and Ca²⁺), pH 7.4, 150mM NaCl, 0.02% sodium azide and 50% glycerol.

Immunogen: The antiserum was produced against synthesized peptide derived from internal of human HKR1.

Purification: The antibody was affinity-purified from

rabbit antiserum by affinity-chromatography using epitope-specific immunogen.

Specificity: HKR1 antibody detects endogenous levels of total HKR1 protein.

Reactivity: Human

Applications: WB: 1:500~1:3000 IF: 1:100~1:500

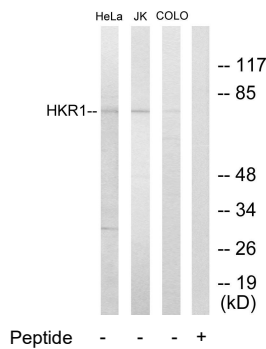
ELISA: 1:1000

References:

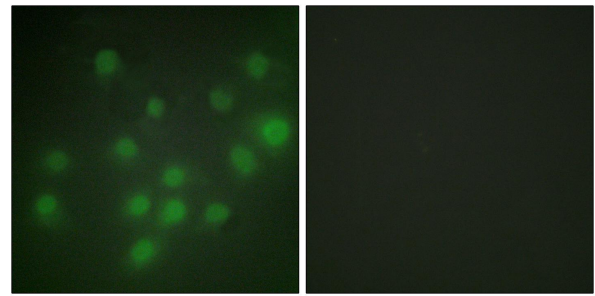
Oguri T., Gene 222:61-67(1998).

The MGC Project Team, Genome Res. 14:2121-2127(2004).

Ruppert J.M., Mol. Cell. Biol. 8:3104-3113(1988).



Western blot analysis of extracts from HeLa cells, Jurkat cells and COLO205 cells, using HKR1 antibody.



Immunofluorescence analysis of HUVEC cells, using HKR1 antibody.